

Hustler Super Z CE Parts Manual



HUSTLER®

•••••

Hustler Turf Equipment

••••

P.O. Box 7000

•••

Hesston, Kansas

•

67062-2097

Table of Contents

Chapter 1

General Information	1-1
---------------------------	-----

Chapter 2 Contents

Rivet Nut Installation	2-2
Footrest Assembly	2-3

Chapter 3 Contents

Hydraulic System Installation	3-2
-------------------------------------	-----

Chapter 4 Contents

Battery Installation	4-2
Deck Lift Assembly	4-4
Steering and Park Brake Assembly	4-6
Pump Belt and Pulleys Installation	4-10

Chapter 5 Contents

Kohler 27 HP Engine Installation	5-2
Fuel System	5-6
Fuel System	5-8
Instrument Panel Assembly	5-10
Electrical Schematic - Kohler (788000)	5-12

Chapter 6 Contents

Front Wheel Assembly	6-2
Front Wheel Breakdown-747782	6-4
Optional Semi-Pneumatic Tire/Wheel-789537	6-5
Drive Wheel Assembly	6-6
Anti-Rollover Wheel Assembly	6-7

Chapter 7 Contents

60" Side Discharge Deck Assembly	7-2
60" Side Discharge Deck Pulley Assembly	7-4
60" Rear Discharge Deck Assembly	7-6
60" Rear Discharge Deck Pulley Assembly	7-8
72" Rear Discharge Deck Assembly	7-10
72" Rear Discharge Deck Pulley Assembly	7-12
Spindle Assembly-350595K	7-14
Spindle Assembly-796235	7-15
Spindle Assembly-796680	7-16

Chapter 8 Contents

Deck Installation	8-2
Deck Belt Routing and Tensioning	8-4

Chapter 9 Contents

Tractor Decals	9-2
Side Discharge Deck Decals	9-4
60" Rear Discharge Deck Decals	9-5
Seat Installation	9-6

Chapter 10 Contents

Mulch Kit. 10-2
60" Mulch Kit-352427 10-3
Index. i-1

Chapter 1

General Information

This Manual covers Hustler Super Z models **927038CE 27/60, 927467CE 27/60RDCE, 927624CE 27/72RDCE.**

Frequently Ordered Parts

PART NO.	DESCRIPTION
027912	LUBRIZOL 7 OZ. BOTTLE
027920	LUBRIZOL 10 OZ. BOTTLE
783936	HYDRAULIC FILTER ELEMENT
781443	PUMP DRIVE BELT
784207	B-SECTION BELT, 72" DECK
781310	B-SECTION BELT, 60" DECK
782292	B-SECTION BELT, 52" DECK
795781	RD DECK BELT, 60" DECK
797167	RD DECK BELT, 72" DECK
068478	FUEL FILTER
789628	KOHLER EFI FUEL FILTER
785261	MAIN AIR FILTER ELEMENT
785279	SAFETY AIR FILTER ELEMENT
772079	KAWASAKI ENGINE OIL FILTER
785634	HONDA ENGINE OIL FILTER
747303	KOHLER ENGINE OIL FILTER
795260	BLADE, F23.86"-H-F-CW, 72" DECK
794867	BLADE, 23.86"-GAT-F-CW, 72" DECK
793398	BLADE, 23.86"-MUL-F-CW, 72" DECK
795252	BLADE, F20.95"-H-F-CW, 60" DECK
793380	BLADE, 20.95"-MUL-F-CW, 60" DECK
794859	BLADE, 20.95"-GAT-F-CW, 60" DECK
795526	BLADE, F17.86"-H-F-CW, 54" DECK
794198	BLADE, 17.86"-MUL-F-CW, 54" DECK
785436	BLADE, 17.86"-GAT-F-CW, 54" DECK

Service Literature

PART NO.	DESCRIPTION
375527	HUSTLER SUPER Z OWNER'S MANUAL
794479CE	KOHLER CE ENGINE MANUAL

Note: When ordering parts, you must use the part number as shown for each part, not the index number. Always give the model and serial number to your parts and service representative.

Note: Items sold in bulk such as seals and hoses are sold by the foot.

Using this manual

Illustrations used were current at the time of printing, but subsequent production changes may cause your machine to vary slightly in detail. Excel Industries, Inc. reserves the right to redesign and change the machine as deemed neces-

sary, without notification. If a change has been made to your machine which is not reflected in this parts manual, see your Hustler dealer for current information and parts.

Hardware Description Codes & Abbreviations

The following codes are used throughout this parts manual. Refer to this list when ordering parts.

ABBREVIATION	DESCRIPTION
CB	CARRIAGE BOLT
CE	CLEVIS PIN
CP	COTTER PIN
CS	CAP SCREW
CW	CUP WASHER
FDRW	FENDER WASHER
FW	FLAT WASHER
HX	HEX HEAD
LW	LOCK WASHER
MB	MACHINE BUSHING
MS	MACHINE SCREW
NT	NUT
SC	SELF TAPPING CAP SCREW
SH	SOCKET HEAD
SB	SHOULDER BOLT
SS	SET SCREW

Standard Torques

The following chart lists the standard torque values for the threaded fasteners found in this manual. Torque all cap screws, nuts and set screws to these values unless a different torque is shown in the Notes section next to the fastener

SIZE	FT-LBS	NM	SIZE	FT-LBS	NM
.250	8.2	11.1	M3	1	1.3
.312	17	23	M4	2.2	3
.375	30	40	M5	4.5	6.1
.438	48	65	M6	7.7	10.4
.500	73	99	M8	18.5	25
.562	105	143	M10	37	50
.625	145	200	M12	64	87
.750	260	350	M16	160	215
.875	420	565	M20	320	435
1.00	625	850	M24	555	750

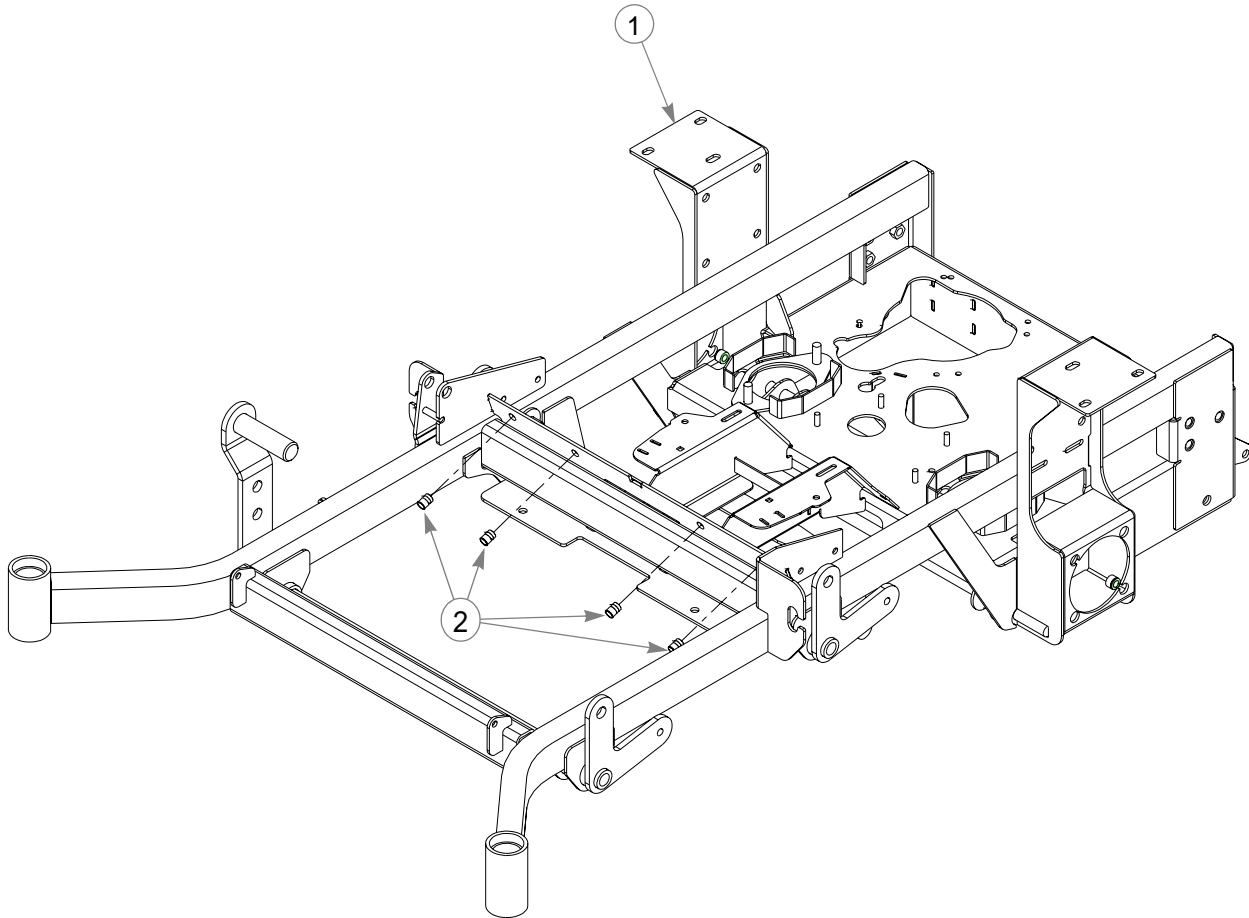
NOTE:

**Loctite 592 to be used on all pipe threads.
Lubricate all grease zerks.**

Chapter 2 Contents

Rivet Nut Installation	2-2
Foot Rest Assembly	2-3

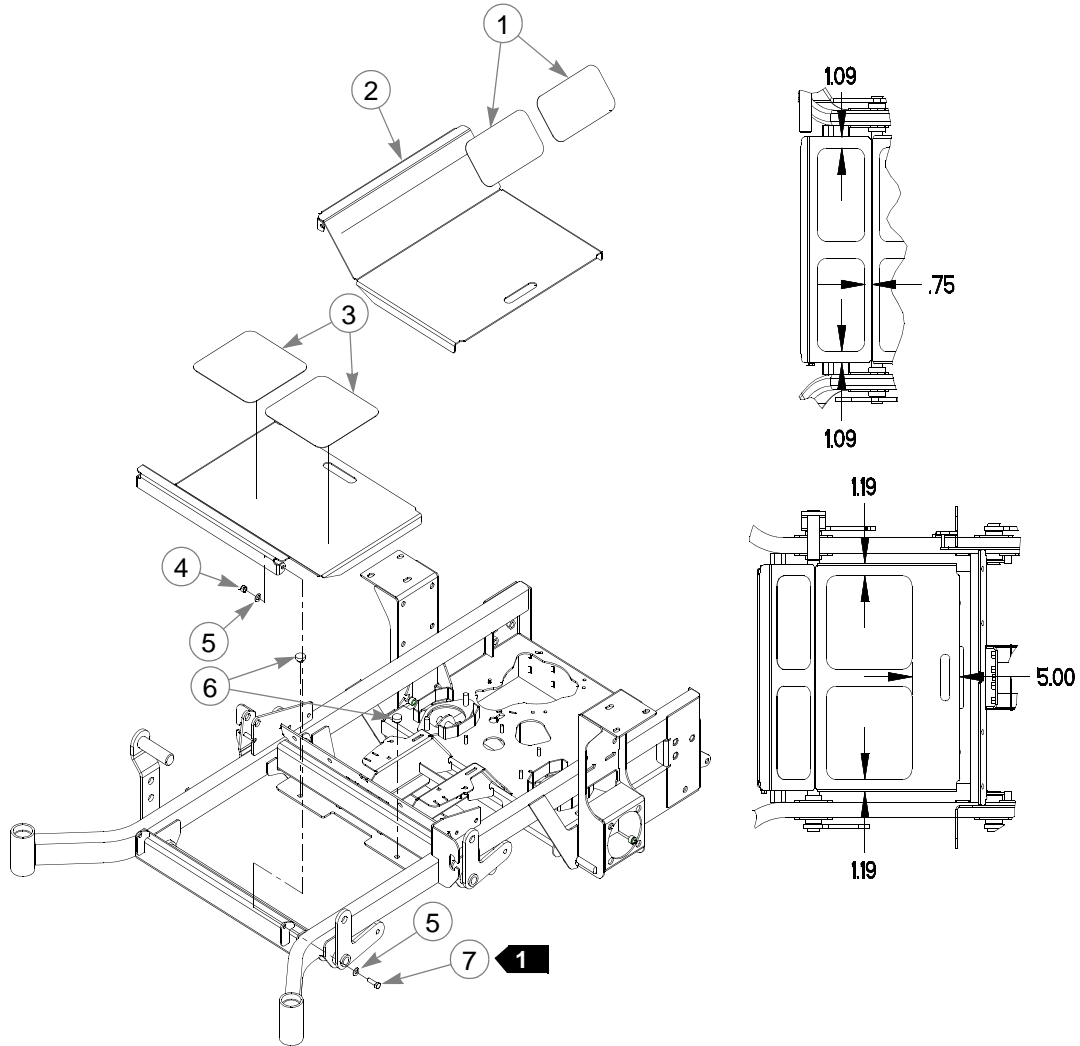
Rivet Nut Installation



INDEX NO.	SERVICE PART NO.	MFG. PART NO.	QTY.	DESCRIPTION
1	545731	353482	1	SUPER Z 60" FRAME
	100412	100412	1	SUPER Z RD 60" FRAME
2	N/A	808493	4	3/8-16 THREAD NUTSERT

NOTES:

Footrest Assembly



INDEX NO.	SERVICE PART NO.	MFG. PART NO.	QTY	DESCRIPTION
1	359547	359547	2	STEP TREAD
2	395533	395533	1	FLOOR
3	305615	305615	2	PLATFORM STEP TREAD
4	086660	086660	2	NT .375-16 HX LK NY
5	767954	767954	4	FW .406X .812 X .060 SAE HD ZN
6	781880	781880	2	RUBBER BUMPER
7	052860	052860	2	CS .375-16 X 1.25 HX G5 ZNYC

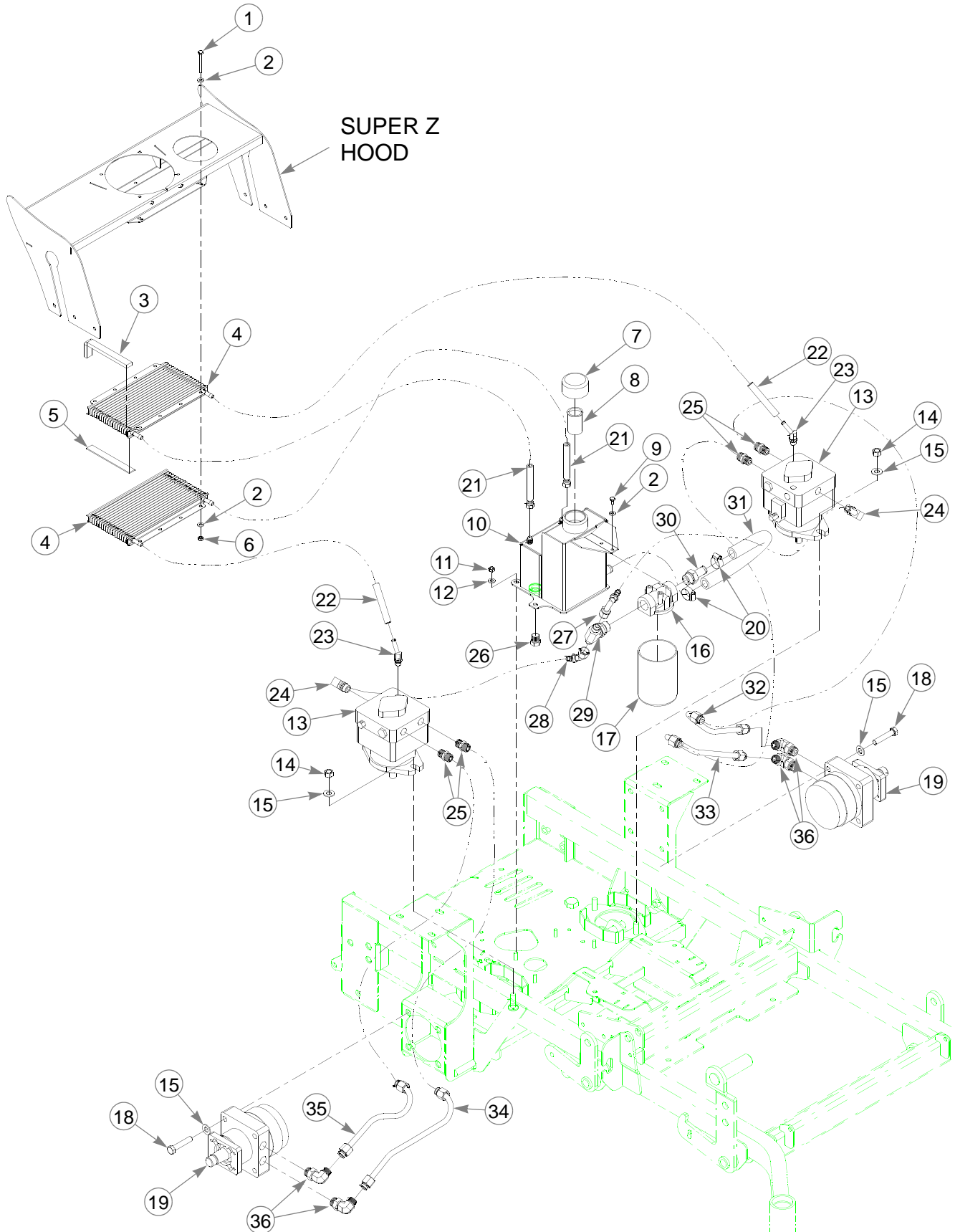
NOTES:

1. Do not tighten, Floor must be able to pivot on these bolts.

Chapter 3 Contents

Hydraulic System Installation.	3-2
--	-----

Hydraulic System Installation



Hydraulic System Installation

INDEX NO.	SERVICE PART NO.	MFG. PART NO.	QTY	DESCRIPTION
1	705608	705608	4	CS .250-20 X 2.25 HX G5 ZNYC
2	768515	768515	10	FW .281 X .625 X .051/.080 HD ZNYC
3	713198	713198	2	SEAL 3/8 X 3/4 X 7.25" LONG
4	783704	783704	2	OIL COOLER
5	033035	033035	2	WEATHERSTRIP 1/8 X 3/4 X 5.88" LONG
6	068551	068551	4	NT .250-20 HX NL ZNYC
7	032763	032763	1	BREATHER CAP
8	032771	032771	1	STRAINER
9	055947	055947	2	CS .250-20 X .50 HX G5 ZNYC
10	357616	357616	1	SUPER Z RESERVOIR
11	034272	034272	4	NT .312-18 HX G5 ZNYC
12	768523	768523	4	FW .343 X .687 X .051/.080 HD ZNYC
13	788042	788042	2	PUMP, HYDRO-GEAR BDP-21L-408
14	008193	008193	4	NT .500-13 HX G5 ZNYC
15	767962	767962	12	FW .531 X 1.063 X .090 SAE HD ZN
16	783928	783928	1	ZAF SERIES FILTER HEAD
17	783936	783936	1	FILTER ELEMENT
18	008573	008573	8	CS .500-13 X 2.50 HX G5 ZNYC
19	782383	782383	2	WHITE MOTOR CE782383-18
20	700484	700484	2	HOSE CLAMP
21	784132	N/A	2	RETURN HOSE ASSY, #6 17.375" LONG
22	784124	N/A	2	RETURN HOSE, #6 16.5" LONG
23	784108	N/A	2	FITTING, #6 BEADED TUBE-ORB 45°
24	784082	N/A	2	FITTING, #8 BEADED TUBE-ORB 90°
25	781534	N/A	4	FITTING, STR-8MORB/-8MSL
26	781658	N/A	1	HEX PLUG FITTING, STR-8MORB
27	784025	N/A	1	SUCTION HOSE ASSY, FILTER-PUMP
28	783993	N/A	1	SUCTION HOSE, TANK-FILTER
29	788174	N/A	1	FITTING, T -8MJIC/8MJIC
30	783985	N/A	1	FITTING, 10 FX05-S
31	784116	N/A	1	SUCTION HOSE, #12 16" LONG
32	782870	N/A	1	TUBE, HYDRAULIC LINE
33	782880	N/A	1	TUBE, HYDRAULIC LINE
34	782458	N/A	1	TUBE, HYDRAULIC LINE
35	782441	N/A	1	TUBE, HYDRAULIC LINE
36	781526	N/A	4	FITTING, 90-10MORB/-8MSL
37	N/A	783720	1	HYDRO KIT (INCLUDES ITEMS 21-36)

NOTES:

1. Add 103.5 mL Lubrizol (027912) to new system or when hydraulic oil is changed (see Owner's Manual).
2. Hydraulic system capacity is 4.732 L. Fill reservoir to within 25.4 mm of top of Item 8 (032771 Strainer).

HYDRAULIC SYSTEM CHARGING PROCEDURE

1. Set handles in the neutral position.
2. Start engine at idle.
3. Let run for a minimum of 30 seconds.
4. Stroke handles to forward position.
5. If motors do not turn in 15 seconds return handles to neutral and repeat step 3 and 4 (one time).
6. If motors do not turn after second attempt, shut off the engine and check for oil at the pump.
7. Increase throttle to half speed and work handles through forward and reverse position until the motor operates smoothly throughout the entire speed range.

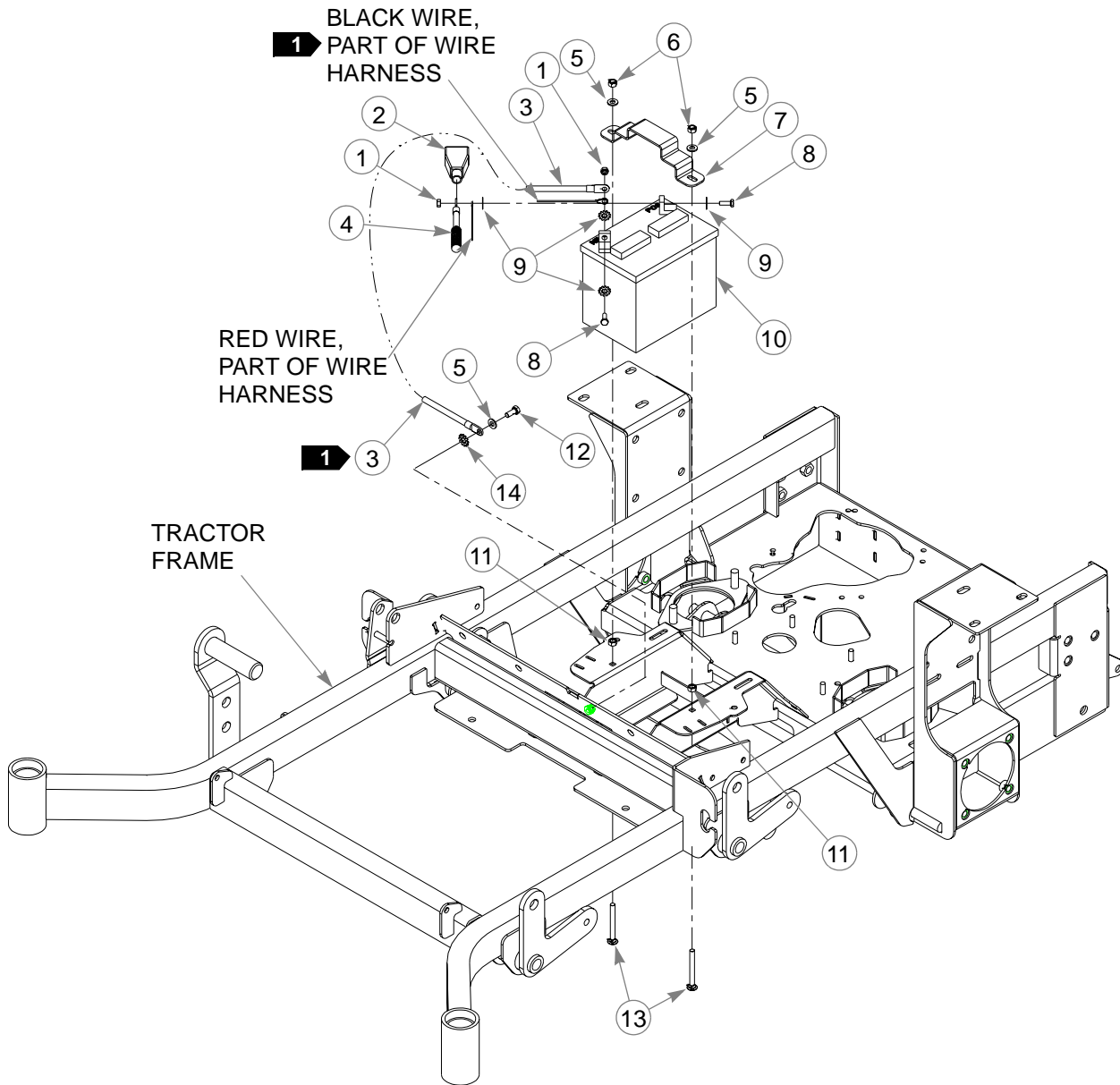
Note:

Seal Kit for hydraulic pump; 784983 (BDP21L Overhaul Seal Kit).

Chapter 4 Contents

Battery Installation	4-2
Deck Lift Assembly	4-4
Steering and Brake Assembly	4-6
Pump Belt and Pulley Installation	4-10

Battery Installation



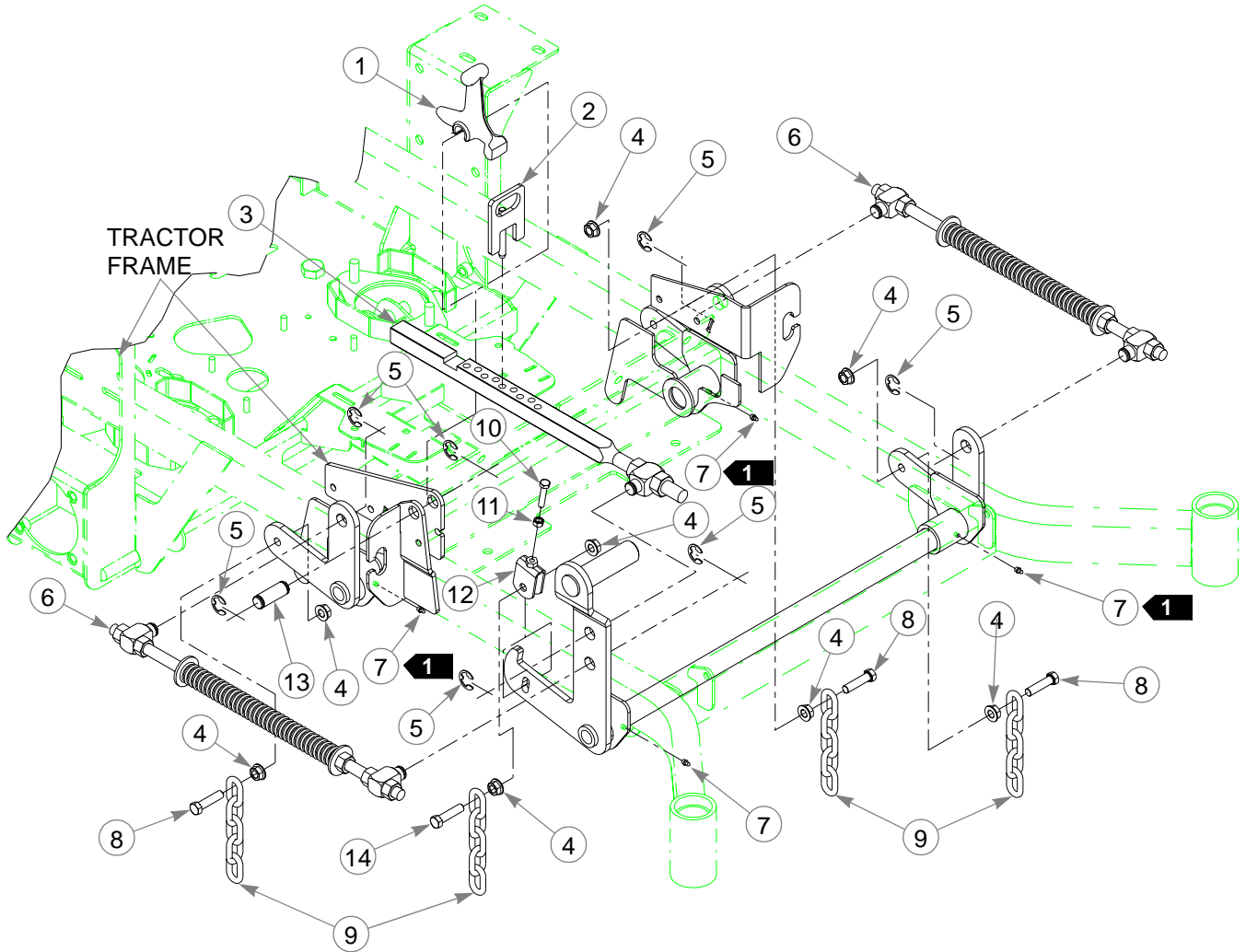
Battery Installation

ITEM NO.	SERVICE PART NO.	MFG. PART NO.	QTY	DESCRIPTION
1	024927	024927	2	NT .250-20 HX GR 5 ZN
2	771428	771428	1	RED BATTERY CABLE BOOT
3	768820	768820	1	BATTERY GROUND CABLE
4	744276	744276	1	POSITIVE BATTERY CABLE
5	768523	768523	3	FW .343 X .687 X .051/.080 HD ZNYC
6	058776	058776	2	NT .312-18 HX NL ZN
7	348417	348417	1	BATTERY CLAMP STRAP
8	055939	055939	2	CS .250-20 X .750 HX G5 ZN
9	029868	029868	4	LW .250 INT-EXT TOOTH ZN
10	740696	740696	1	BATTERY
11	034272	034272	2	NT .312-18 HX G5 ZN
12	034280	034280	1	CS .312-18 X.750 HX G5 ZN
13	779850	779850	2	CB .312-18 X 3.00 FUL ZN
14	029876	029876	1	LW .312 INT-EXT TOOTH ZN

NOTES:

1. When performing service on mower, disconnect battery ground cable and black wire of harness and do not reconnect to battery until engine is ready to be started. See Owners Manual.

Deck Lift Assembly



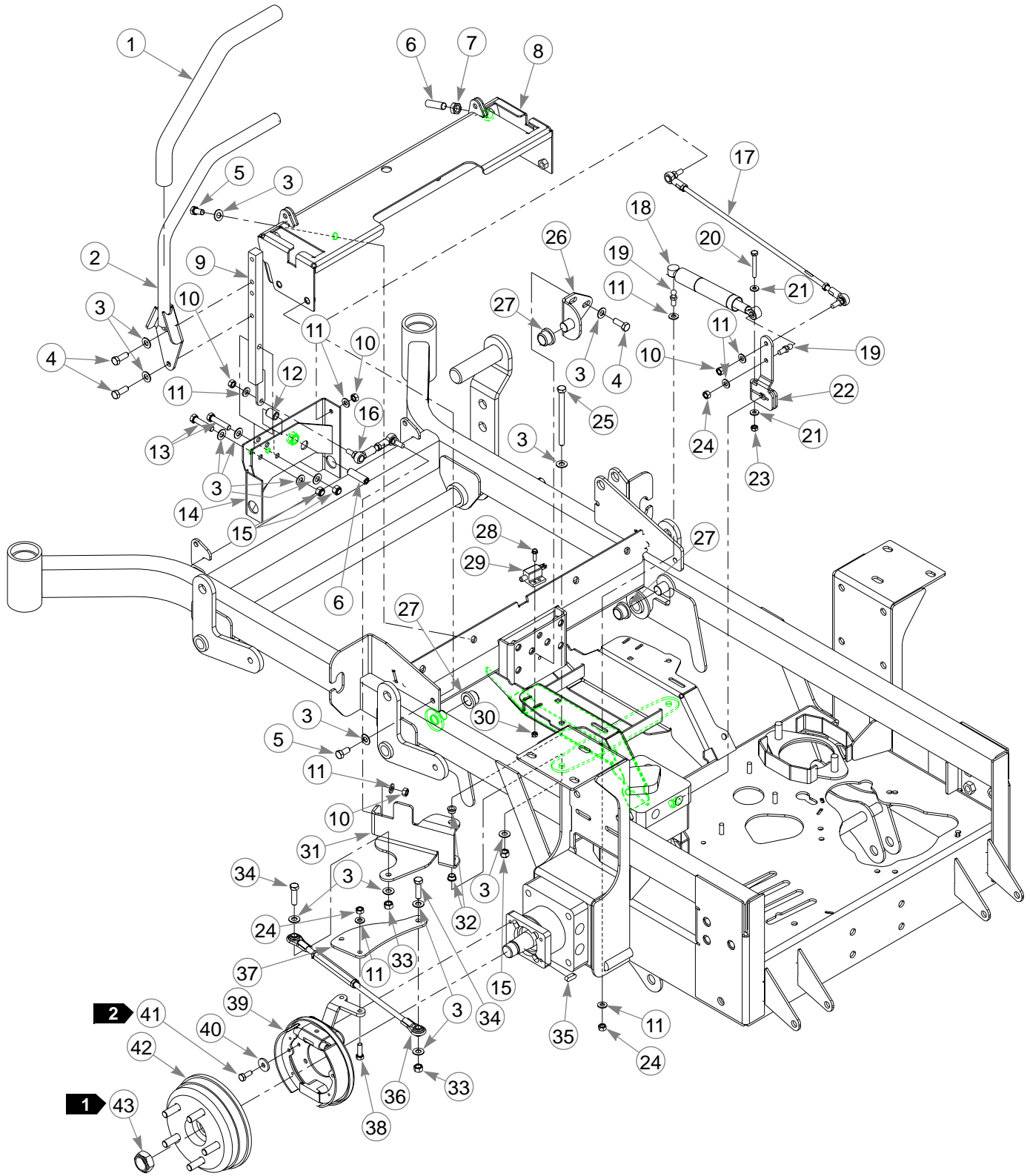
Deck Lift Assembly

INDEX NO.	SERVICE PART NO.	MFG. PART NO.	QTY	DESCRIPTION
1	348318	348318	1	STOP HANDLE
2	600437	600437	1	DECK HEIGHT PIN, 1/2" PIN
	348284	N/A		HEIGHT ADJUSTMENT STOP, 3/8" PIN
3	783001	783001	1	DECK LIFT INDICATOR
4	704643	704643	8	NT .437-14 HX FLG ZN
5	781294	781294	7	CLIP E, 1.00 X.625X .050
6	782995	782995	2	DECK LIFT SPRING ASSEMBLY
7	015495	015495	4	STRAIGHT GREASE FITTING
8	055749	055749	3	CS .437-14X1.750 HX G5 ZNYC
9	348391	348391	4	DECK LIFT CHAIN
10	756270	756270	1	CS .312-18 X 1.50 FLTHR GR5 ZNYC
11	034272	034272	1	NT .312-18 HX G5 ZNYC
12	348458	348458	1	DECK LEVELER YOKE W/A
13	781229	781229	1	CE .750X2.25 X1.75 HEADLESS
14	781831	781831	1	CS .437-14 X 1.750 FULTH G5 ZNYC

NOTES:

1. Apply grease to zerks (see owners manual).
2. Verify pin diameter before ordering replacement part. For mowers with 3/8" diameter pins, order 348284; for mowers with 1/2" pins order 600437. For replacement purposes, item 3 includes item 2 with 1/2" diameter.

Steering and Park Brake Assembly



Steering and Park Brake Assembly

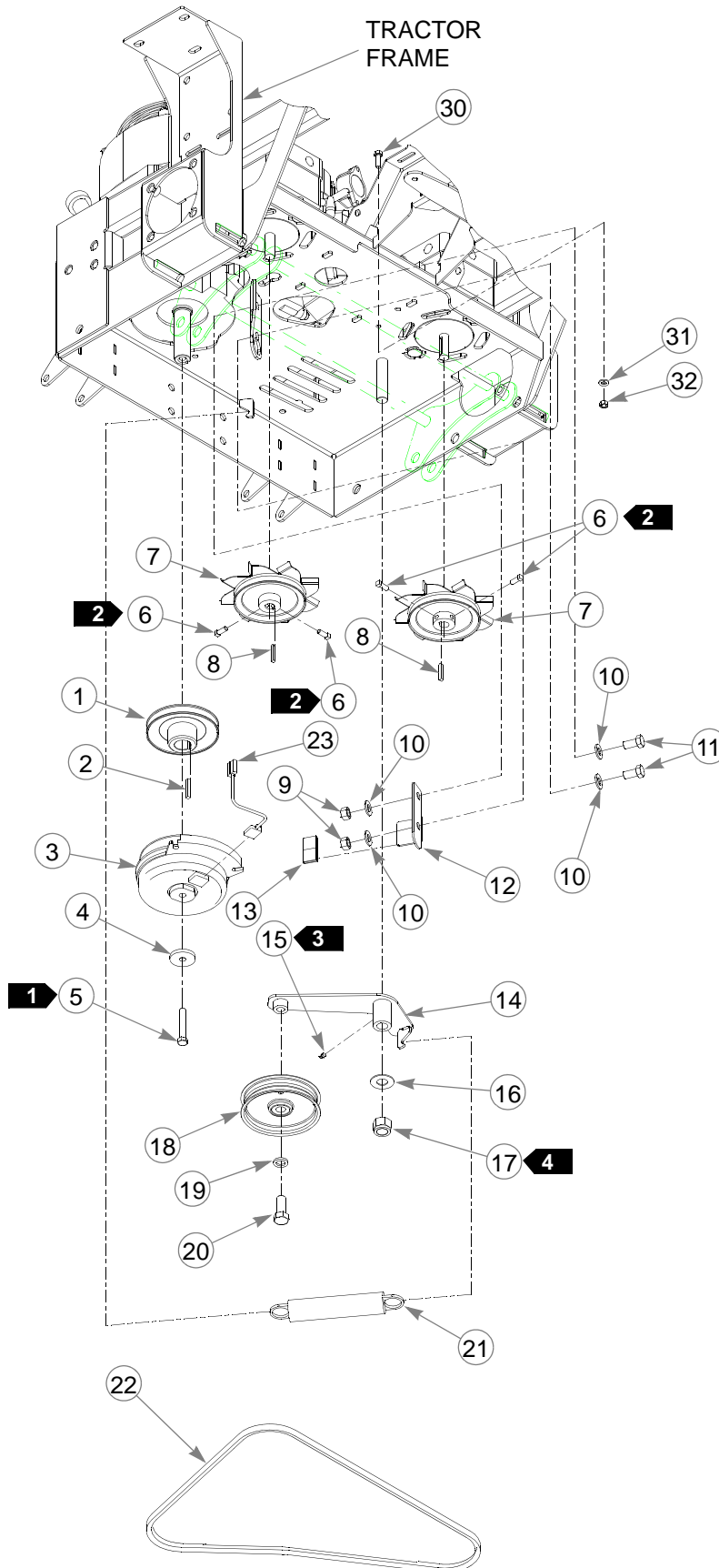
ITEM NO.	SERVICE PART NO.	MFG. PART NO.	QTY	DESCRIPTION
	781260	N/A	2	STEERING BAR GRIP
5	348755	348755	2	STEERING BAR
	767954	767954	43	FW .406 X .812 X .060 SAE HD ZN
	036244	036244	10	CS .375-16 X 1.000 HX G5 ZN
	055822	055822	8	CS .375-16 X .750 HX G5 ZN
	781716	781716	4	SS .500-13 X 1.75 SH ZN
	053199	053199	2	NT .500-13 HX JAM ZN
	348987	348987	1	STEERING CONTROL PANEL
	348946	348946	2	STEERING ARM MOUNT
	041152	041152	8	NT .312-24 HX ZN
	768523	768523	10	FW .34 3X .687 X .051/.080 HD ZN/YL
	348862	348862	4	STEERLEVER BUSHING
	705178	705178	6	CS .375-16 X 1.750 HX G5 ZN
	348888	348888	1	STEERLEVER SUPPORT LH
	348714	348714	1	STEERLEVER SUPPORT RH
	086660	086660	8	NT .375-16 HX LK NY
	781583	781583	2	BRAKE ROD ASSEMBLY
	781286	781286	2	PUMP ROD ADJUSTER ASSEMBLY
	783696	783696	2	CENTERING DAMPENER
	781922	781922	4	DAMPENER BALL STUD
	704163	704163	2	CS .250-20 X 2.00 HX G5 ZN
	768515	768515	4	FW .281 X .625 X .051/.080 HD ZN/YL
	347684	347684	2	SUPER Z PUMP ARM
	068551	068551	2	NT .250-20 HX NL ZN
	034272	034272	8	NT .312-18 HX G5 ZN
	782979	782979	2	CS .375-16 X 4.75 HX G5 ZN
	348797	348797	2	ADJUSTABLE PIVOT
	781153	781153	4	BUSHING
	063198	063198	4	CS 10-24 X .750 HXFLK ZN
	781211	781211	2	PUSH BUTTON SWITCH
	059832	059832	4	NT #10-24 HX NL ZN
	350330	350330	1	L.S. BRAKE PIVOT ARM
	350264	350264	1	R.S. BRAKE PIVOT ARM
	765339	765339	4	BUSHING
	054502	054502	4	NT .375-16 HX GRD 5 ZN
	005116	005116	4	CS .375-16 X 1.375 HX G5 ZN
	783852	N/A	2	KEY FOR WHITE MOTOR
	350397	350397	2	BRAKE LINK TURNBUCKLE
	354035	354035	2	WHITE BRAKE LEVER EXTENSION
	036236	036236	4	CS .312-18 X 1.000 HX G5 ZN
3	783126	783126	1	LH WHITE BRAKE ASSY
4	783118	783118	1	RH WHITE BRAKE ASSY
	712927	712927	8	FW .344 X 1.00 X .12 HRD ZNYC
	048876	048876	8	CS .312-18 X .750 HX G8 ZNYC
	782953	782953	2	WHITE HUB ASSEMBLY
	783845	N/A	2	NUT FOR WHITE MOTOR

NOTES:

1. Torque to 379.6- 420.3 N-m. Included with wheel motor.
2. Torque to 32.5 N-m.
3. 783126 used on left wheel.
4. 783118 used on right wheel.
5. Includes item 1 steering bar grip (781260).

This page intentionally left blank.

Pump Belt and Pulleys Installation



Pump Belt and Pulleys Installation

INDEX NO.	SERVICE PART NO.	MFG. PART NO.	QTY	DESCRIPTION
1	783761	783761	1	SUPER Z SINGLE ENGINE PULLEY
2	212076	212076	1	KEY 1/4 SQ X 1.50 LONG
3	787366	787366	1	WARNER CLUTCH
4	783829	783829	1	FW .460 X 1.750 X .250 ZNYC
5	785659	785659	1	CS .437-20 X 2.50 HX G5 ZNYC
6	083196	083196	4	SS .312-18X .750 SQ-HD ZN
7	782466	782466	2	PULLEY & FAN FOR BDP-21
8	783712	783712	2	KEY FOR BDP21L
9	008193	008193	2	NT .500-13 HX G5 ZNYC
10	767962	767962	4	FW .531 X 1.063 X .090 SAE HD ZN
11	016527	016527	2	CS .500-13 X 1.00 HX G5 ZNYC
12	366765	366765	1	CLUTCH ANCHOR ANGLE
13	784918	784918	2	RUBBER BUMPER
14	349761	349761	1	PUMP IDLER ARM
15	015495	015495	1	STRAIGHT GREASE FITTING
16	025296	025296	1	FW .760 X 1.625 X .08 ZN
17	061101	061101	1	NT .750-10 HX NL ZN
18	781856	781856	1	IDLER PULLEY
19	028118	028118	1	FW .62 X 1.00 X.134 ZN
20	794446	794446	1	CS .625-11 X 1.50 HX G5 ZN
21	781302	781302	1	IDLER SPRING
22	781443	781443	1	A-SEC PUMP IDLER BELT
23	791251	N/A	1	CLUTCH PIGTAIL HARNESS WITH DIODE
30	036236	036236	1	CS .312-18 X 1.00 HX G5 ZNYC
31	768523	768523	1	FW .343 X .687 X .051/.080 HD ZNYC
32	034272	034272	1	NT .312-18 HX G5 ZNYC

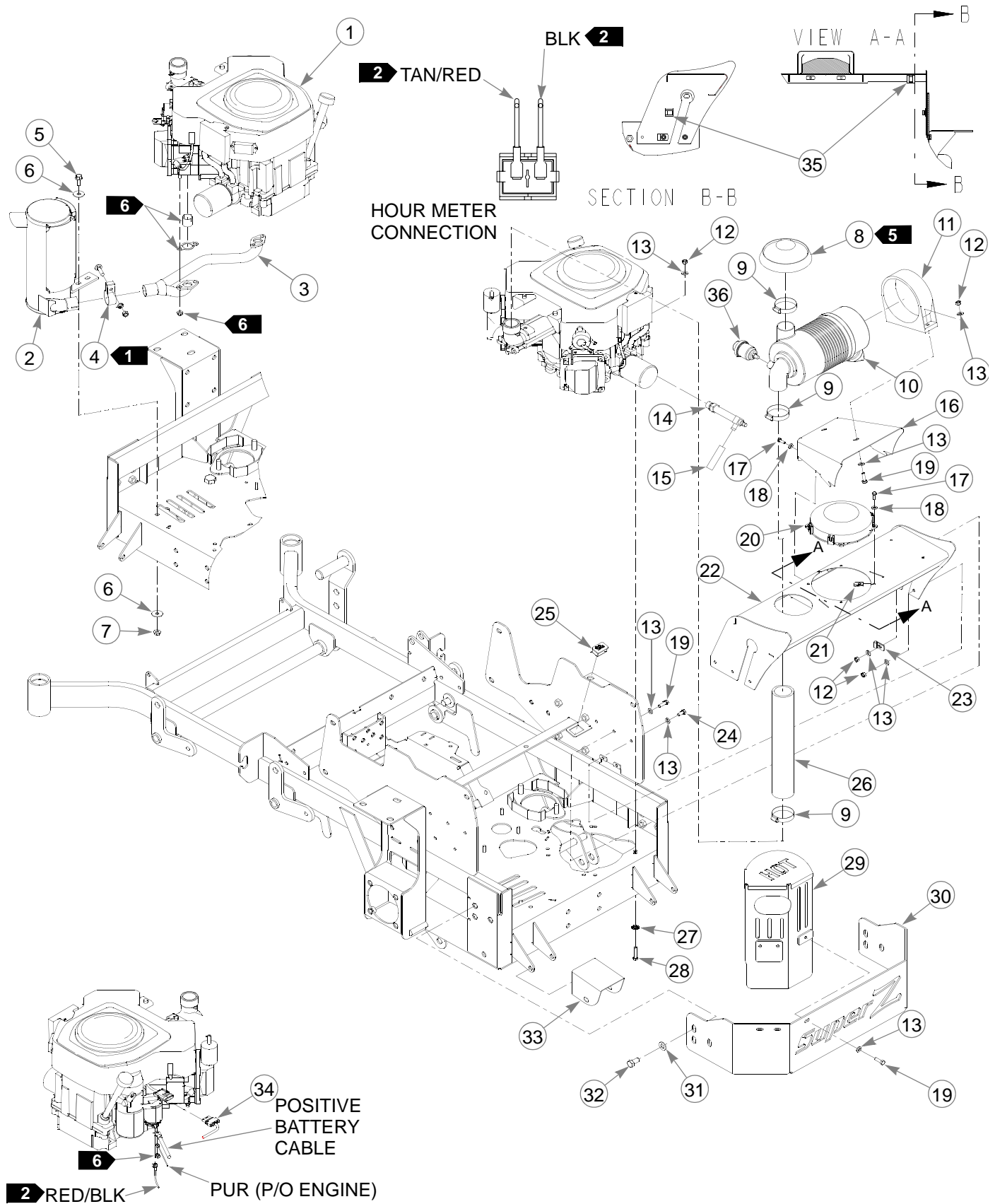
NOTES:

1. Torque to 61.0-65.1 N-m.
2. Torque to 16.3-20.3 N-m.
3. Apply grease at zerk (see owners manual).
4. Do not torque Item 17 (NT .750-10 HX NL ZN), Item 14 (349761 Pump Idler Arm) should pivot freely.

Chapter 5 Contents

Kohler 27 HP Engine Installation	5-2
Fuel System Installation	5-6
Fuel System Installation	5-8
Instrument Panel Assembly	5-10
Electrical Schematic - Kohler (788000)	5-12

Kohler 27 HP Engine Installation



Kohler 27 HP Engine Installation

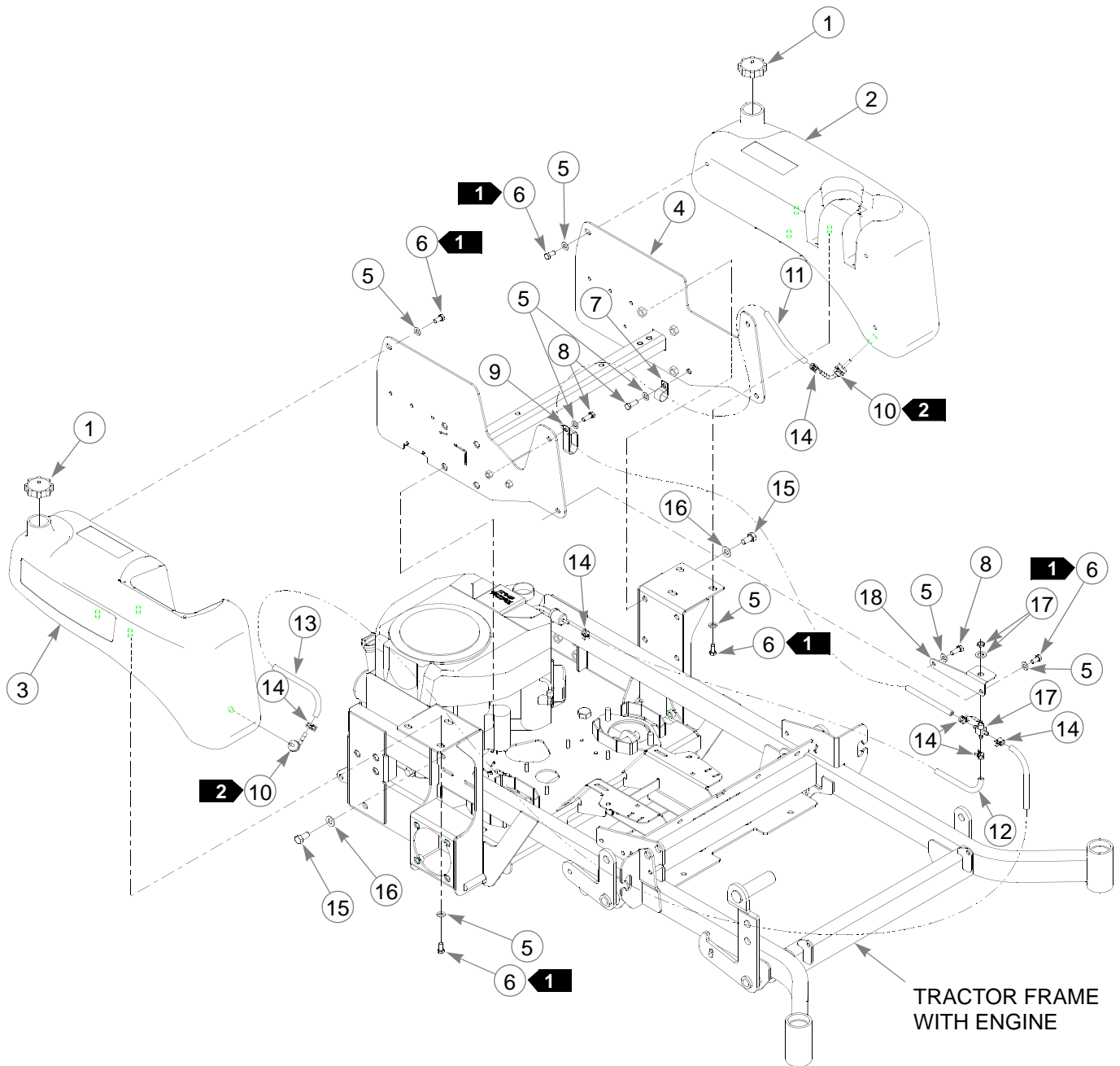
ITEM NO.	SERVICE PART NO.	MFG. PART NO.	QTY	DESCRIPTION
1	788216	788216	1	KOHLER 27HP ENGINE
2	788018	788018	1	MUFFLER
3	788026	788026	1	MUFFLER MANIFOLD
1	785378	785378	1	1.50" MUFFLER CLAMP
5	029751	029751	2	CS .375-16 X 1.00 HXFLK ZNYC
6	705137	705137	4	FW .391 X 1.250 X .060 ZNYC
7	016899	016899	2	NT .375-16 HXFLK ZNYC
8	786673	786673	1	DONALDSON AIR CLEANER CAP
9	057661	057661	2	HOSE CLAMP
10	782763	782763	1	AIR CLEANER
11	785741	785741	1	MOUNTING BAND
12	034272	034272	11	NT .312-18 HX G5 ZN
13	768523	768523	21	FW .343 X .687 X .051/.080 HD ZN/YL
7	796672	796672	1	3/8-18 OIL DRAIN VALVE
7	787713	787713	1	0.50" LOW PRESSURE HOSE
16	357780	357780	1	HOOD SCOOP
17	055939	055939	6	CS .250-20 X .750 HX G5 ZNYC
18	768515	768515	6	FW .281 X .625 X .051/.080 HD ZNYC
19	036236	036236	6	CS .312-18 X 1.00 HX G5 ZNYC
20	783837	783837	1	ELECTRIC COOLER FAN
21	044818	044818	4	CN ZN TIN-C7343-1420
22	356121	356121	1	SUPER Z HOOD
23	778738	778738	1	.312 WIRING CLAMP
24	034280	034280	4	CS .312-18X .750 HX G5 ZNYC
25	769166	769166	1	HOUR METER
26	795310	795310	1	REMOTE AIR FILTER HOSE
27	029876	029876	4	LW .312 INT-EXT TOOTH ZN
28	052837	052837	4	CS .312-18 X 1.500 HX G5 ZN
29	382168	382168	1	MUFFLER GUARD
30	380691	380691	1	SUPER Z ENGINE GUARD
31	767962	767962	6	FW .531 X 1.063 X .090 SAE HD ZN
32	016527	016527	6	CS .500-13 X 1.00 HX G5 ZNYC
33	377994	377994	1	MMZ ROLLER HEAT SHIELD
34	788000	788000	1	SUPER Z KOHLER WIRE HARNESS
35	047654	047654	2	CLIP
36	788943	788943	1	AIR FILTER INDICATOR

NOTES:

1. Includes mounting hardware.
2. Part of Item 34 (788000 Tractor Wire Harness).
3. Engine oil capacity; 1.9 L.
4. Engine RPM to be set at 2750 ± 50 .
5. Includes one (1) of 057661 Hose Clamp.
6. Supplied with engine.
7. Used on mowers with serial numbers 05031839 and higher. This part replaces drain hose, 90° fitting, and drain plug, on mowers with serial numbers prior to 05031839.
8. Air filter service parts:

785261	MAIN AIR FILTER ELEMENT
763318	VACUATOR VALVE

This page intentionally left blank.



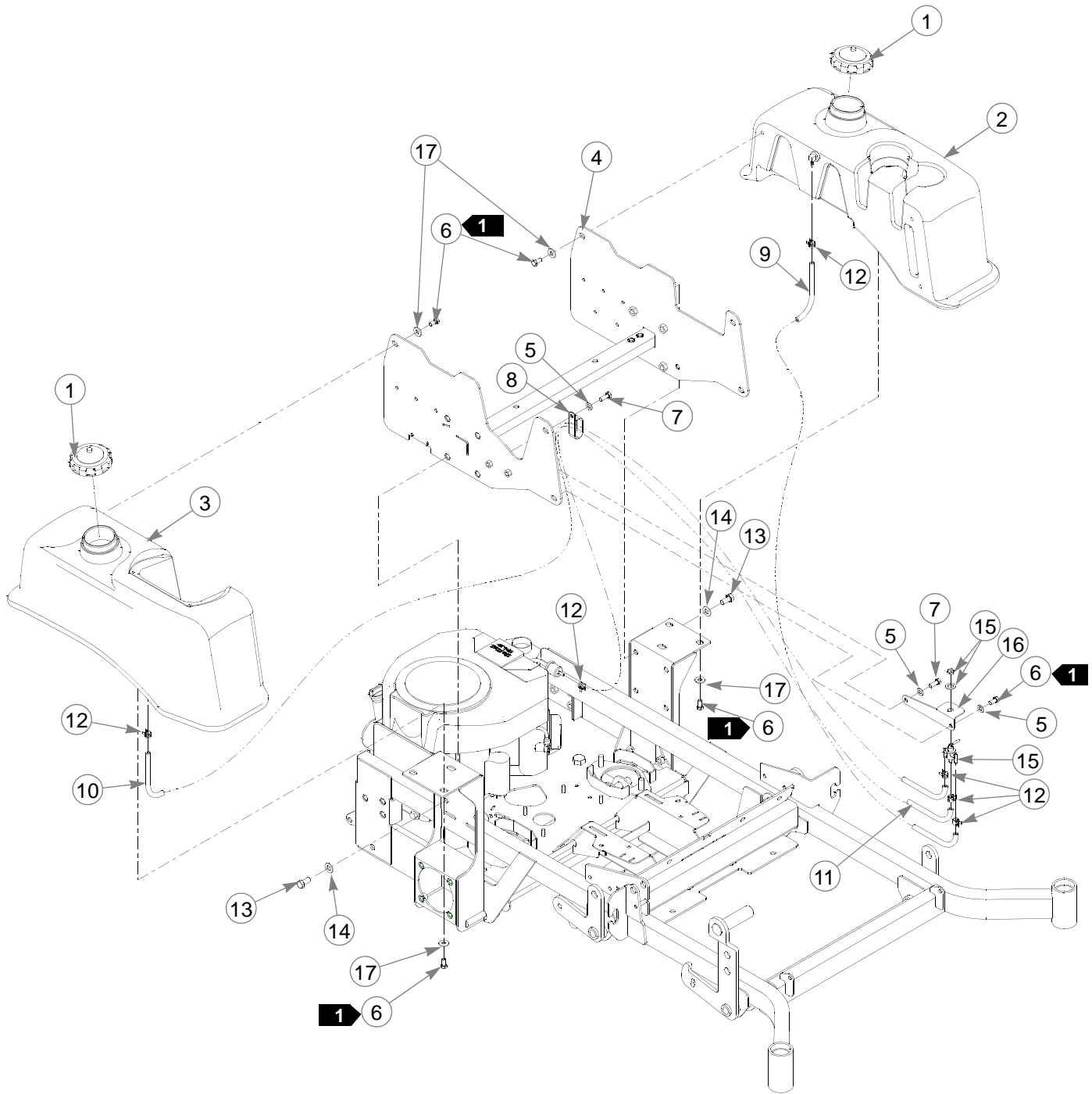
ITEM NO.	SERVICE PART NO.	MFG. PART NO.	QTY	DESCRIPTION
1	784181	784181	2	FUEL TANK CAP
2	796326	796326	1	LEFT SIDE SUPER Z FUEL TANK
3	796318	796318	1	RIGHT SIDE SUPER Z FUEL TANK
4	349944	349944	1	REAR SEAT SUPPORT
5	767954	767954	3	FW .406 X .812 X .060 SAE HD ZN
6	055822	055822	12	CS .375-16 X .750 HX G5 ZN
7	000398	000398	1	CLAMP
8	036244	036244	2	CS .375-16 X 1.000 HX G5 ZN
9	045088	045088	1	HOSE CLAMP 1"
10	791277	N/A	2	FUEL TANK 90° FITTING
11	015818	015818	1	FUEL LINE 50" TOTAL
12	015818	015818	1	FUEL LINE 39" TOTAL
13	015818	015818	1	FUEL LINE 7" TOTAL
14	000323	000323	6	CLIP
15	016527	016527	8	CS .500-13 X 1.00 HX G5 ZN
16	767962	767962	8	FW .531 X 1.063 X .090 SAE HD ZN
17	745059	745059	1	3-WAY FUEL VALVE
18	347989	347989	1	FUEL SHUT-OFF BRACKET
	000331	000331	3	BLACK CABLE TIE (NOT SHOWN)

NOTES:

1. Torque to 27.1 N-m.
2. Included with new fuel tank.
3. Used on mowers with serial number prior to 05042114.

Fuel System

2



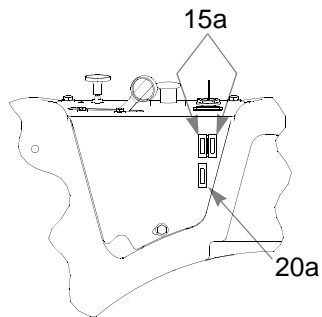
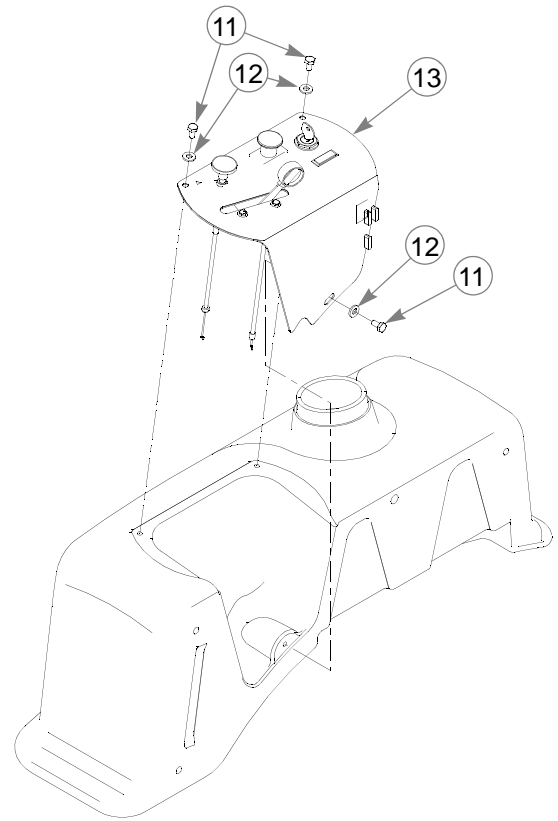
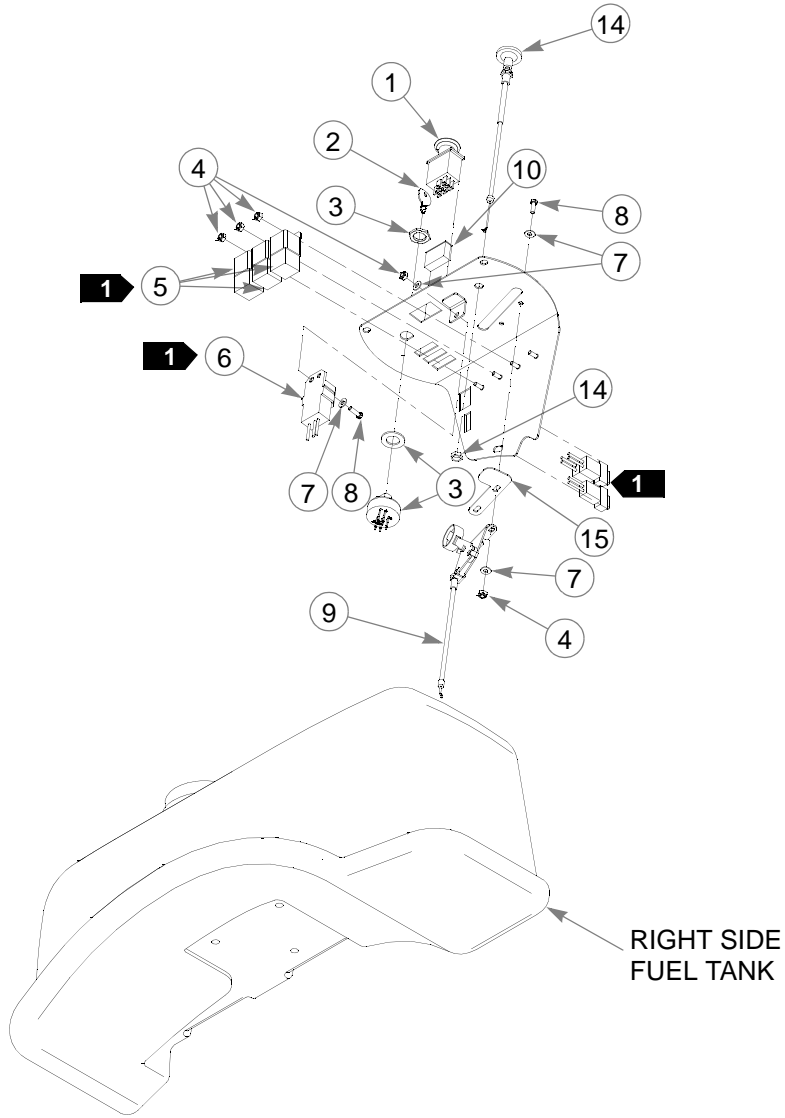
ITEM NO.	SERVICE PART NO.	MFG. PART NO.	QTY	DESCRIPTION
1	779306	779306	2	FUEL TANK CAP
2	793240	793240	1	LEFT SIDE FUEL TANK
3	796318	796318	1	RIGHT SIDE FUEL TANK
4	349944	349944	1	REAR SEAT SUPPORT
5	767954	767954	3	FW .406 X .812 X .060 SAE HD ZN
6	055822	055822	14	CS .375-16 X .750 HX G5 ZN
7	036244	036244	2	CS .375-16 X 1.000 HX G5 ZN
8	045088	045088	1	HOSE CLAMP 1"
9	015818	015818	1	FUEL LINE 45.5" TOTAL
10	015818	015818	1	FUEL LINE 26.5" TOTAL
11	015818	015818	1	FUEL LINE 42" TOTAL
12	000323	000323	6	CLIP
13	016527	016527	8	CS .500-13 X 1.00 HX G5 ZN
14	767962	767962	8	FW .531 X 1.063 X .090 SAE HD ZN
15	797084	797084	1	3-WAY FUEL VALVE
16	347989	347989	1	FUEL SHUT-OFF BRACKET
17	712919	712919	11	FW .406X 1.00X.12 HRD Z
	000331	000331	3	BLACK CABLE TIE (NOT SHOWN)

NOTES:

1. Torque to 20 ft.-lbs/27.1 N-m.
2. Used on mowers with serial number 05042114 and higher.
3. Service parts for fuel tanks (not shown):

PART NO.	DESCRIPTION
785295	FLANGE GROMMET
794107	1/4 ID, 3/8 OD, 1/16 WALL TUBING
794081	1/4 DIP TUBE WEIGHT FITTING
792986	1/4 X 1/4 ELBOW FITTING

Instrument Panel Assembly



FUSE SIZE
AND LOCATION

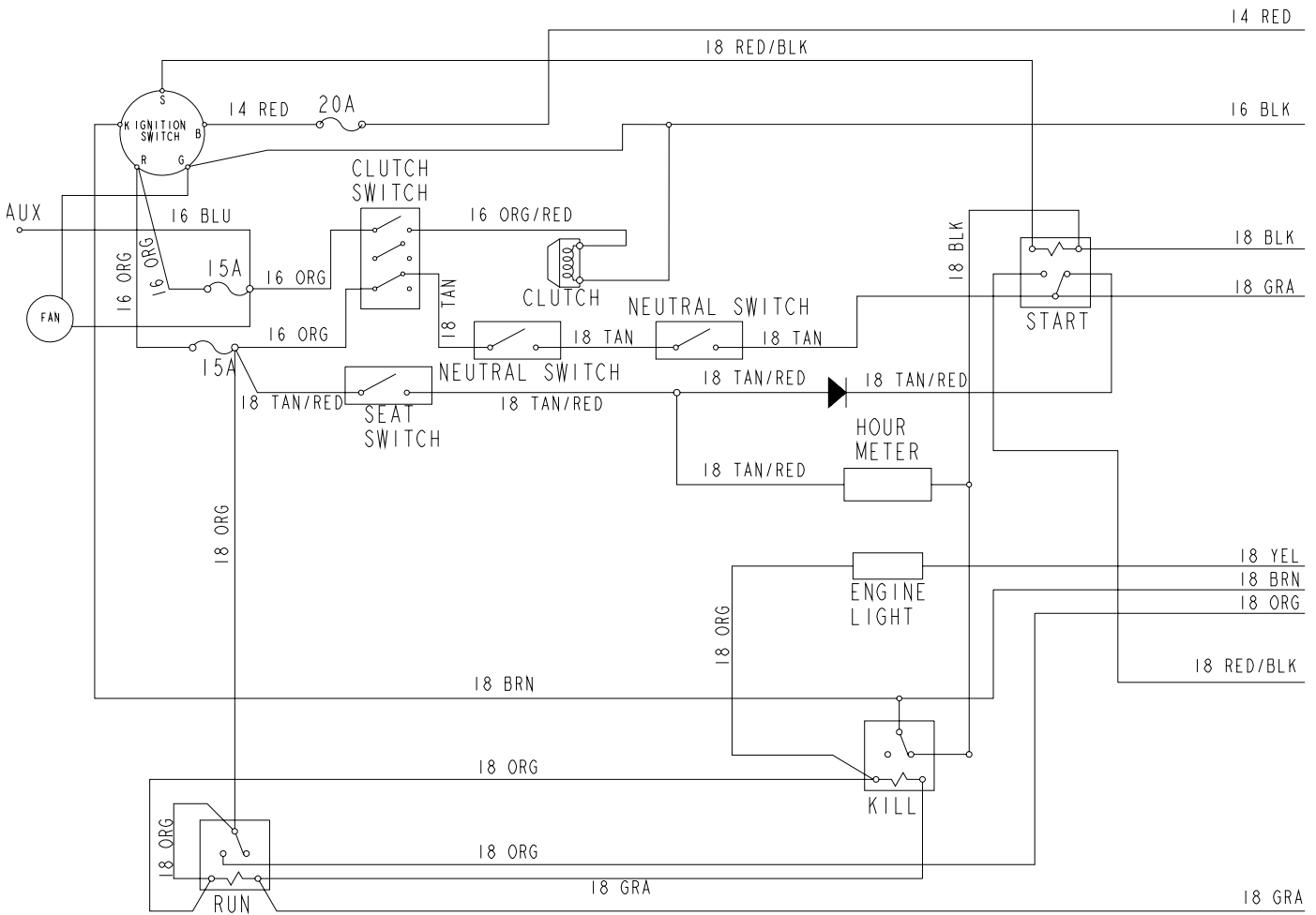
Instrument Panel Assembly

ITEM NO.	SERVICE PART NO.	MFG. PART NO.	QTY	DESCRIPTION
1	776476	776476	1	PTO SWITCH
2	083022	N/A	2	IGNITION KEY
	785808	785808	1	INDAK COATED KEY
3	045898	045898	1	KEY SWITCH
4	059832	059832	6	NT #10-24 HX NL ZN
5	026237	N/A	3	RELAY
6	762195	N/A	1	DELAY MODULE
7	704932	704932	6	FW .219 X .500 X .048 ZN
8	714998	714998	3	MS #10-24 X .625 HX ZN
9	778365	778365	1	THROTTLE/CHOKE CABLE
10	712257	712257	1	RED INDICATOR LIGHT
11	055947	055947	3	CS .250-20 X .500 HX G5 ZN
12	768515	768515	3	FW .281 X .625 X .051 / .080 HD ZN/YL
13	349308	349308	1	INSTRUMENT PANEL
14	786657	786657	1	CHOKE CABLE
15	102707	102707	1	CE THROTTLE STOP

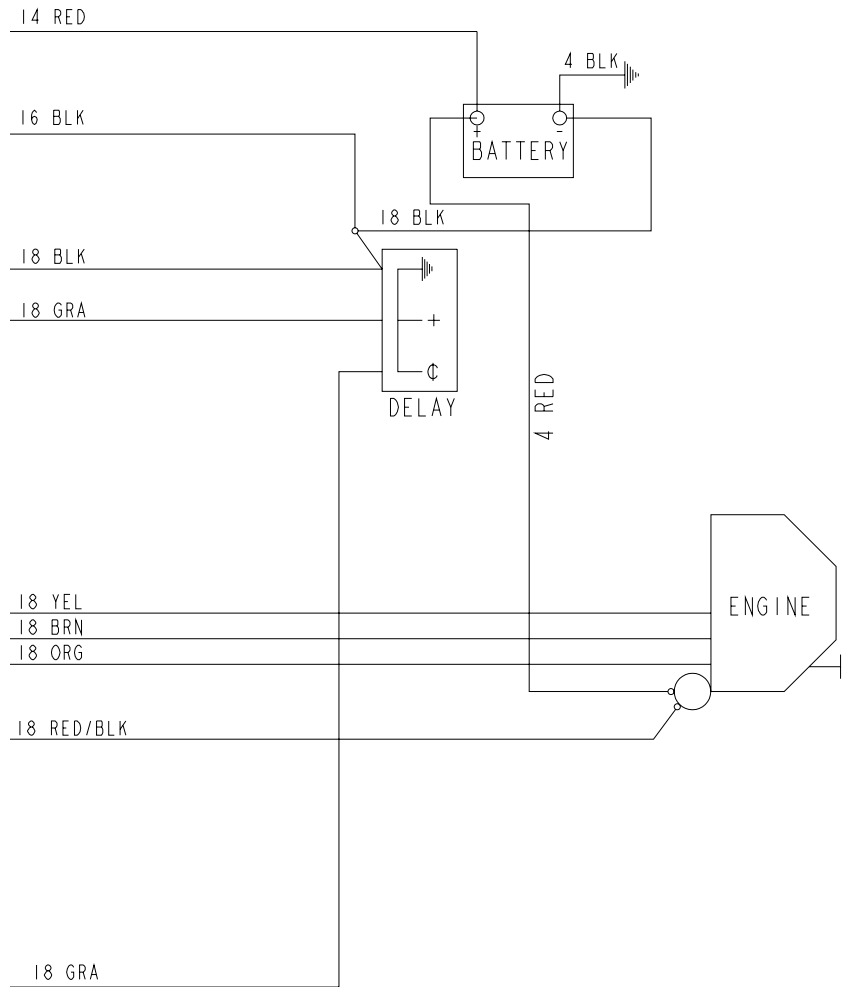
NOTES:

1. Part of 788000 (Wire Harness)

Electrical Schematic - Kohler (788000)



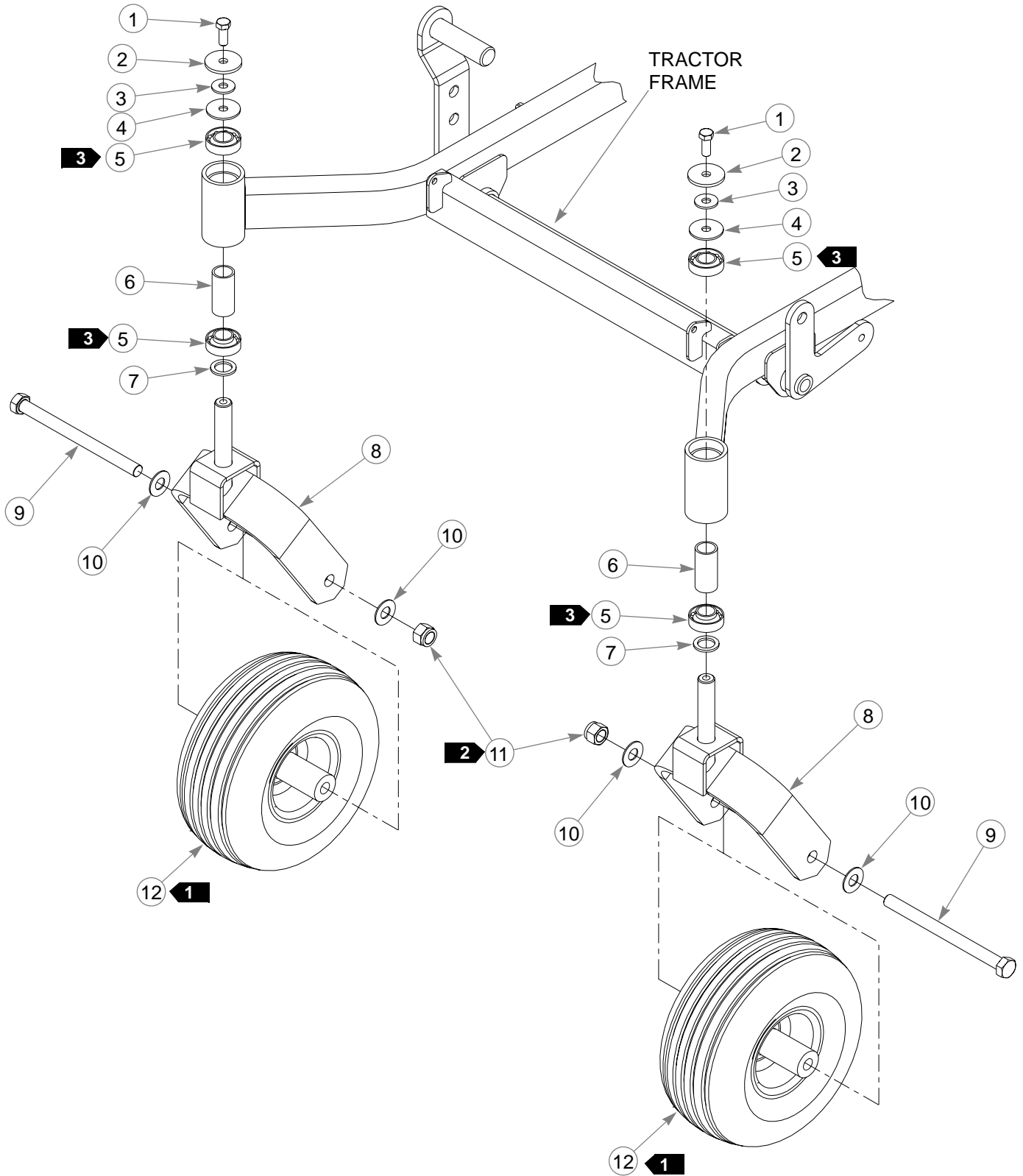
Electrical Schematic - Kohler (788000)



Chapter 6 Contents

Front Wheel Assembly.	6-2
Front Wheel Breakdown-747782	6-4
Optional Semi-Pneumatic Tire/Wheel-789537	6-5
Drive Wheel Assembly.	6-6
Anti-Rollover Wheel Assembly	6-7

Front Wheel Assembly



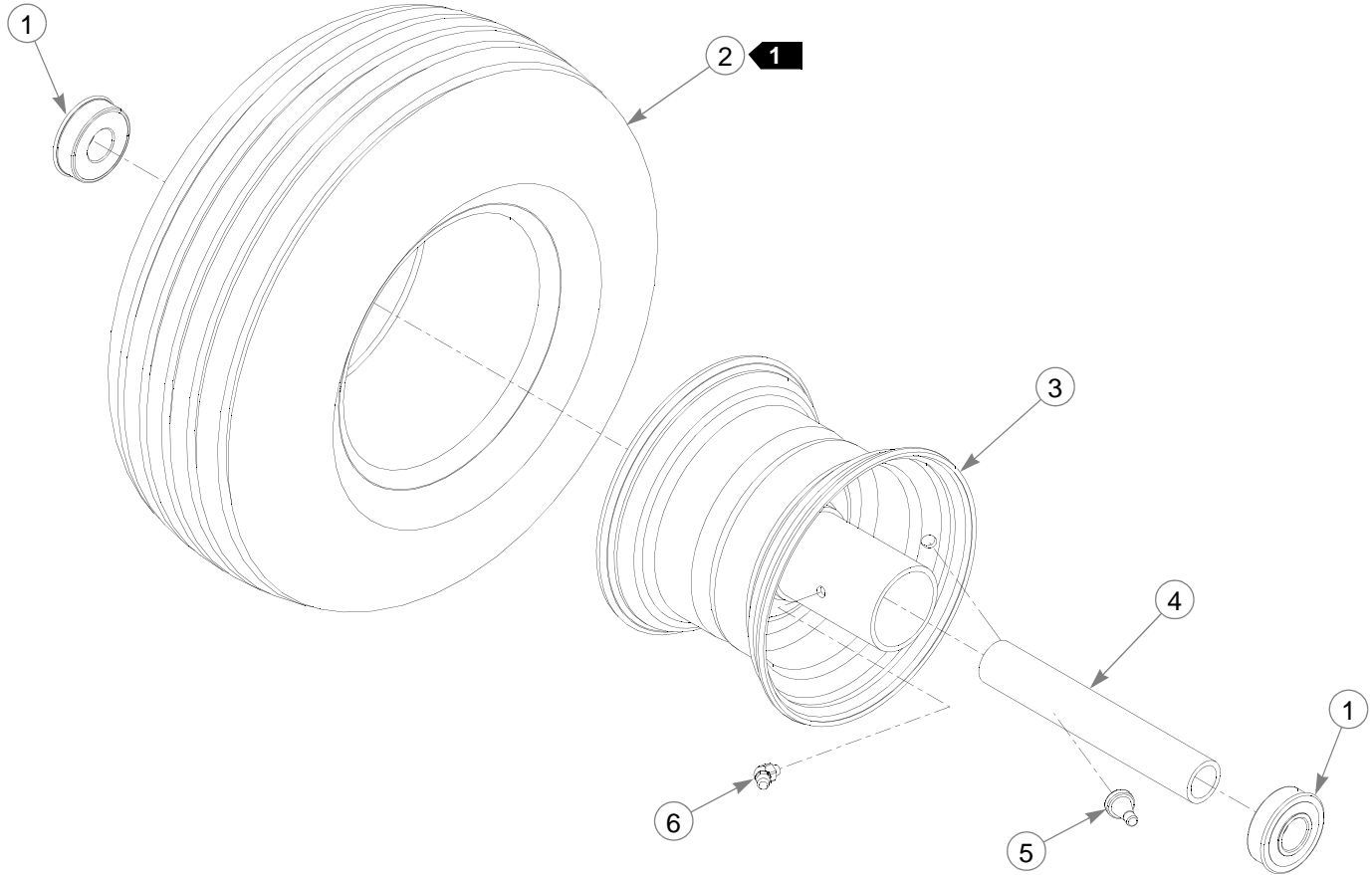
Front Wheel Assembly

INDEX NO.	SERVICE PART NO.	MFG. PART NO.	QTY	DESCRIPTION
1	705954	705954	2	CS .500-13 X 1.25 HX G5 ZN
2	344267	344267	2	FW .510 X 2.15 X .187 SPL ZN
3	798603	798603	2	FW .515X1.65X.125 HD ZY
4	263517	263517	2	BEARING DISC
5	784223	784223	4	BEARING
6	387035	387035	2	SPACER, 1.07 X 1.312 X 2.793
7	045765	045765	2	FW 1.030 X 1.500 X.134 ZN
8	349266	349266	2	FORK
9	041475	041475	2	CS .750-10 X 9.50 HX ZN
10	025296	025296	4	FW .760 X 1.625 X .08 ZN
11	061101	061101	2	NT .750-10 HX NL ZN
12	747782	747782	2	WHEEL & TIRE ASSY

NOTES:

1. Apply grease to zerks (see owners manual).
2. Torque to 135.6 N-m.
3. Assemble with extended inner race toward item 6 (387035 Spacer, 1.07 x 1.312 x 2.793).

Front Wheel Breakdown-747782

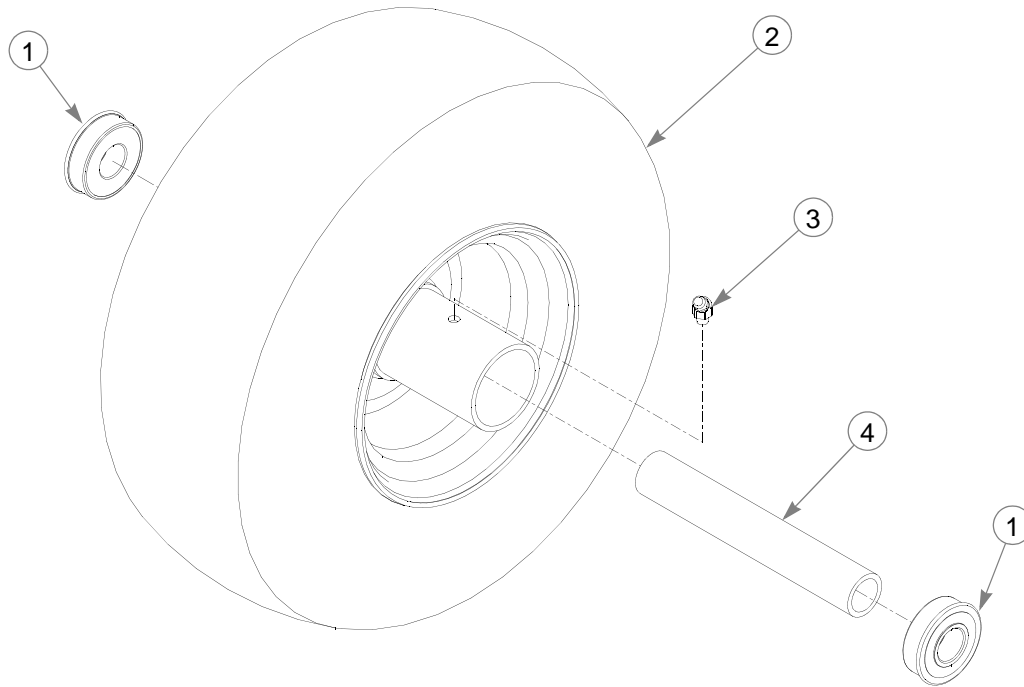


ITEM NO.	SERVICE PART NO.	MFG. PART NO.	QTY	DESCRIPTION
1	039677	N/A	2	WHEEL BEARING
2	747741	N/A	1	13 X 6.50 TIRE
3	747832	N/A	1	6 X 4.5 WHEEL
4	782771	N/A	1	BEARING SPACER
5	019521	N/A	1	TIRE VALVE
6	015511	N/A	1	GREASE FITTING 45 DEG 1/4

NOTES:

1. Inflate tire to 55.2-68.9 kPa.

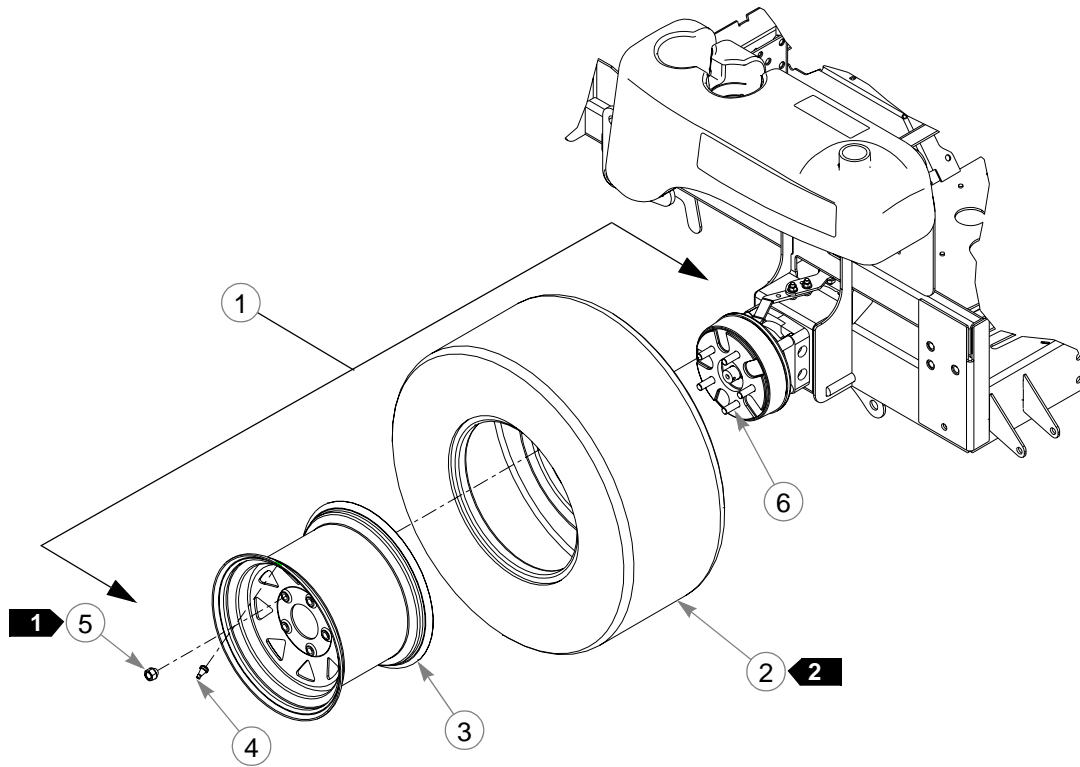
Optional Semi-Pneumatic Tire/Wheel-789537



ITEM NO.	SERVICE PART NO.	MFG. PART NO.	QTY	DESCRIPTION
1	039677	N/A	2	WHEEL BEARING
2	789537	N/A	1	TIRE/WHEEL ASSEMBLY
3	015511	N/A	1	GREASE FITTING 45 DEG 1/4
4	782771	N/A	1	BEARING SPACER

NOTES:

Drive Wheel Assembly

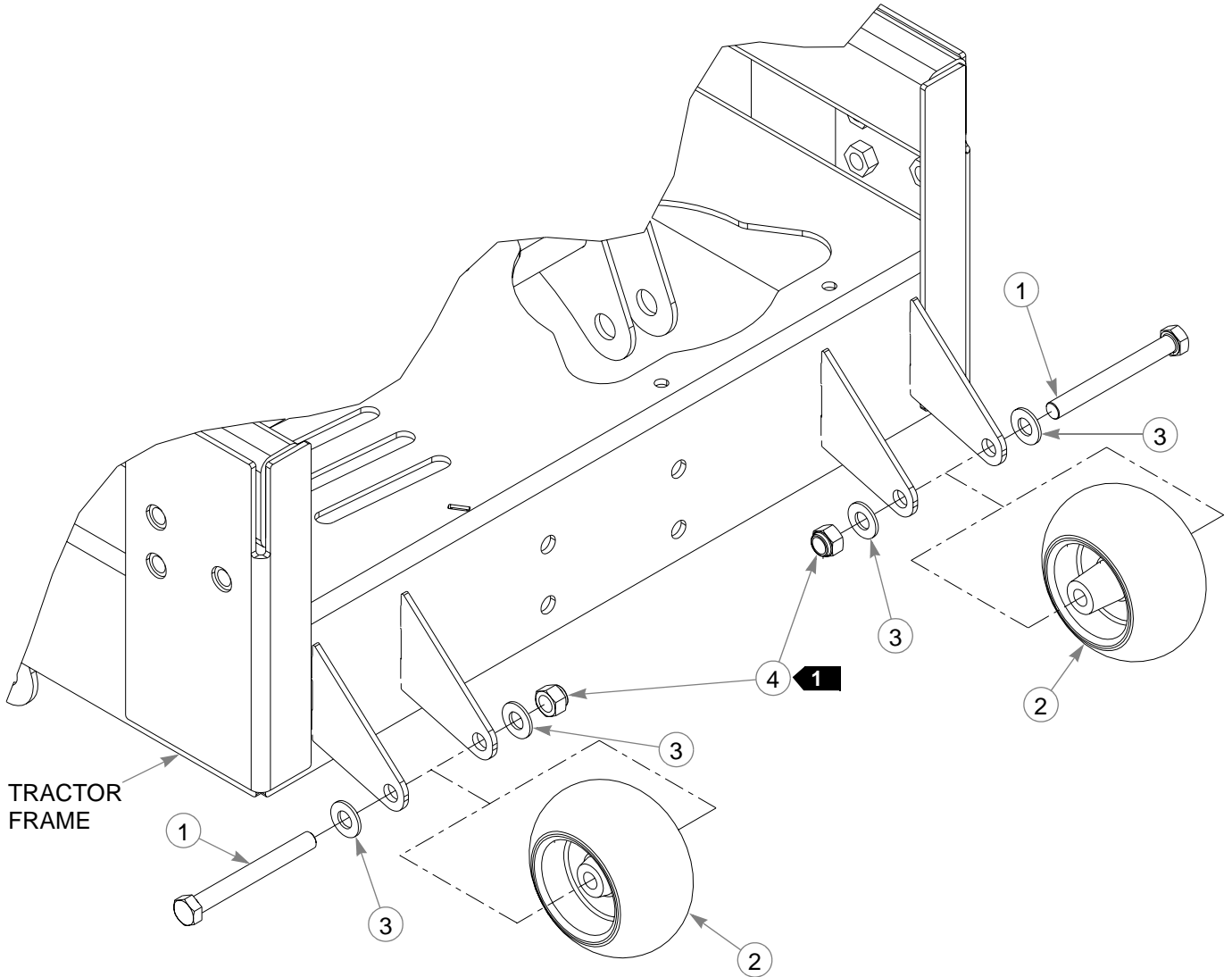


INDEX NO.	SERVICE PART NO.	MFG. PART NO.	QTY	DESCRIPTION
1	784058	784058	2	WHEEL & TIRE ASSY FOR 72" SD & RD, 60" RD(QTY PER TRACTOR)
2	781245	N/A		TIRE, 12 X 12 X 24 FOR 72" & 60"
3	784066	N/A		WHEEL ASSY 12 X 8.50 FOR 72" & 60"
4	019521	N/A		TIRE VALVE
5	061077	061077	5	WHEEL NUT (QTY PER WHEEL)
1	781237	781237	2	WHEEL & TIRE ASSY FOR 60" SD ONLY (QTY PER TRACTOR)
2	781245	N/A		TIRE, 12 X 12 X 24 FOR 60" SD ONLY
3	781252	N/A	2	WHEEL ASSEMBLY 12 X 8.50 FOR 60" SD ONLY
4	019521	N/A	2	TIRE VALVE
5	061077	061077	5	WHEEL NUT (QTY PER WHEEL)
1	782078	782078	2	WHEEL & TIRE ASSY FOR 52"
2	782284	N/A		TIRE, 23 X 9.50-12 FOR 52"
3	782086	N/A		WHEEL ASSY 12 X 7.00 FOR 52"
4	019521	N/A	2	TIRE VALVE
5	061077	061077	5	WHEEL NUT (QTY PER WHEEL)
6	770859	N/A	10	1/2" WHEEL LUG STUD

NOTES:

1. Torque to 88.1-101.7 N-m.
2. Inflate tire to 55.2-68.9 kPa.

Anti-Rollover Wheel Assembly



INDEX NO.	SERVICE PART NO.	MFG. PART NO.	QTY	DESCRIPTION
1	068239	068239	2	CS .500-13 X 4.500 HX G5 ZN
2	031997	031997	2	ANTI-SCALP WHEEL
3	767962	767962	4	FW .531 X 1.063 X .090 SAE HD ZN
4	781567	781567	2	NT .50-13 HX LK NY

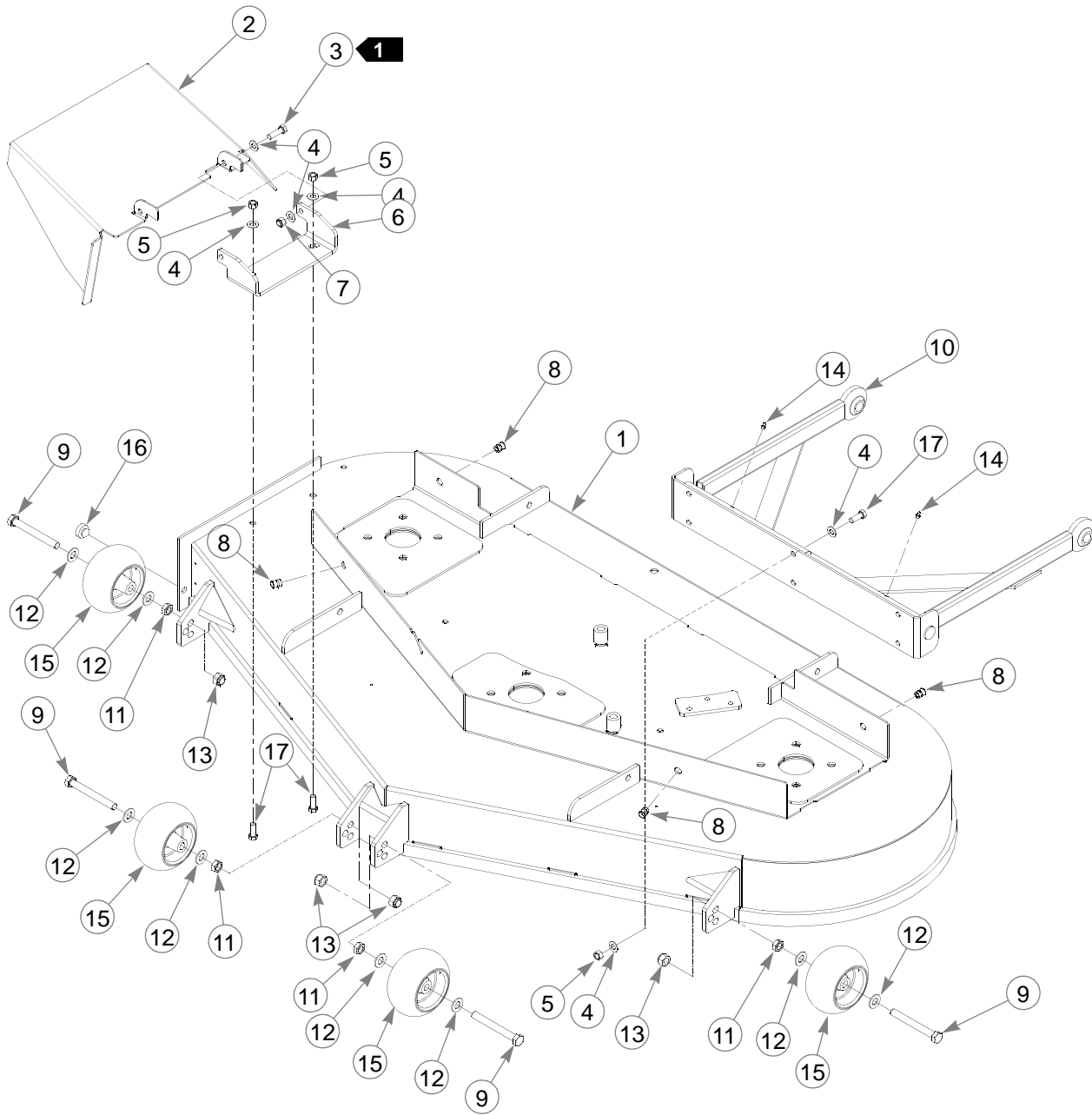
NOTES:

1. Do not torque, wheel must turn freely.

Chapter 7 Contents

60" Side Discharge Deck Assembly	7-2
60" Side Discharge Deck Pulley Assembly	7-4
60" Rear Discharge Deck Assembly	7-6
60" Rear Discharge Deck Pulley Assembly	7-8
72" Rear Discharge Deck Assembly	7-10
72" Rear Discharge Deck Pulley Assembly	7-12
Spindle Assembly–350595K	7-14
Spindle Assembly–796235	7-15
Spindle Assembly–796680	7-16

60" Side Discharge Deck Assembly



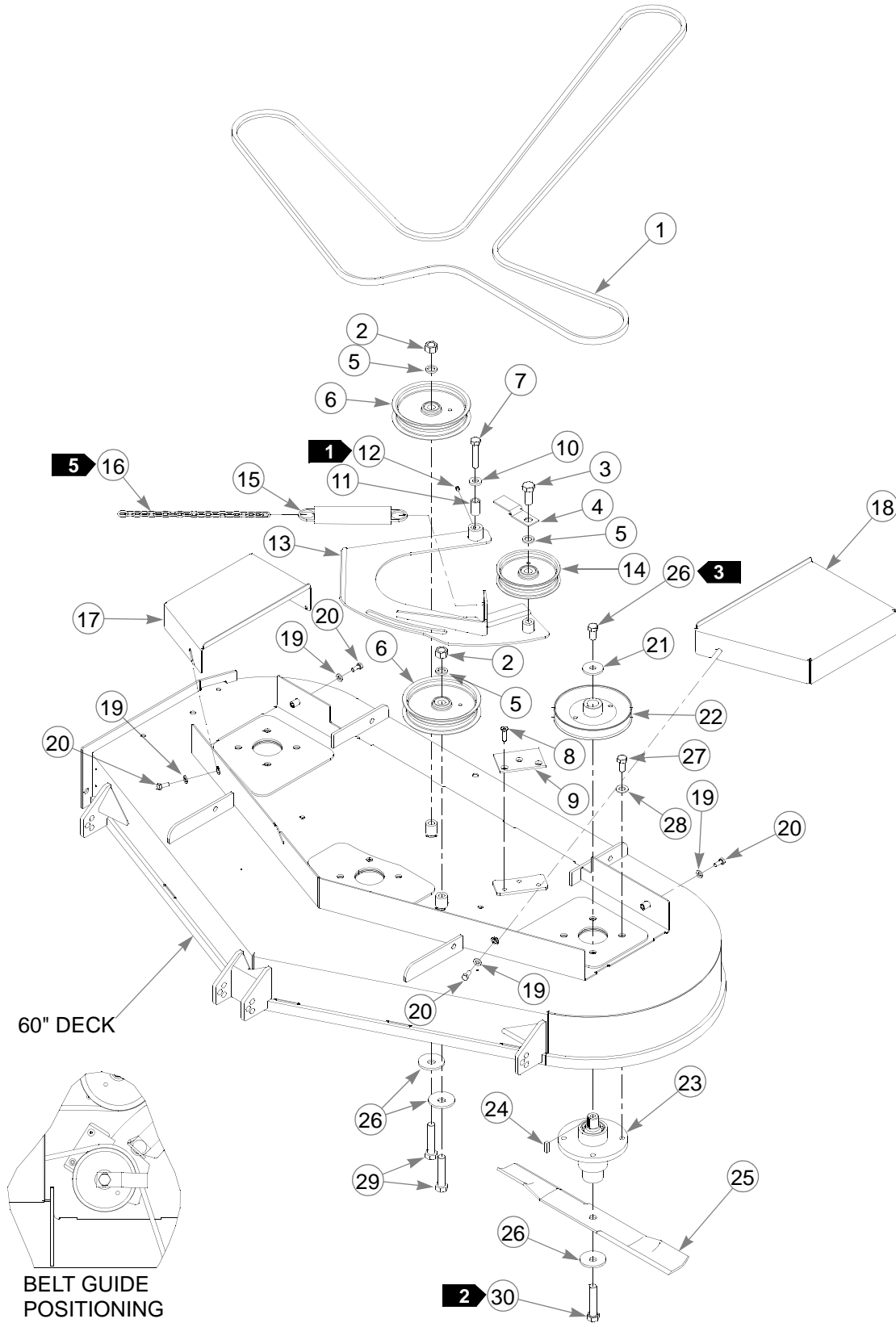
60" Side Discharge Deck Assembly

INDEX NO.	SERVICE PART NO.	MFG. PART NO.	QTY.	DESCRIPTION
4 1	349100	349100	1	60" DECK CRATED
2	350504	350504	1	DISCHARGE CHUTE
3	052860	052860	2	CS .375-16 X 1.250 HX G5 ZN
4	767954	767954	18	FW .406 X .812 X .060 SAE HD ZN
5	054502	054502	8	NT .375-16 HX GRD 5 ZN
6	349522	349522	1	DISCHARGE CHUTE MOUNT BRACKET
7	086660	086660	2	NT .375-16 HX LK NY
8	N/A	808485	4	5/16-18 THREAD RIVET NUT
9	781708	N/A	4	CS .500-13 X 4.25 HX G5 ZN
10	349803	349803	1	PUSHER
11	053199	N/A	4	NT .500-13 HX JAM ZN
12	767962	N/A	8	FW .531 X 1.063 X .090 SAE HD ZN
13	781567	781567	4	NT .50-13 HX LK NY
14	015495	015495	2	STRAIGHT GREASE FITTING
15	031997	N/A	4	ANTI-SCALP WHEEL
16	781880	781880	1	BUMPER
17	036244	036244	7	CS .375-16X1.000 HX G5 ZN
2 3	788166	788166	4	ANTI SCALP WHEEL ASSEMBLY

NOTES:

1. Do not torque, Item 2 (349324 Discharge Chute) must pivot freely.
2. Factory assembled in top hole for shipping purposes.
3. Includes Items 9, 11,12, and 15.
4. Service part deck includes decals, see "Side Discharge Deck Decals" on page 9-4.

60" Side Discharge Deck Pulley Assembly



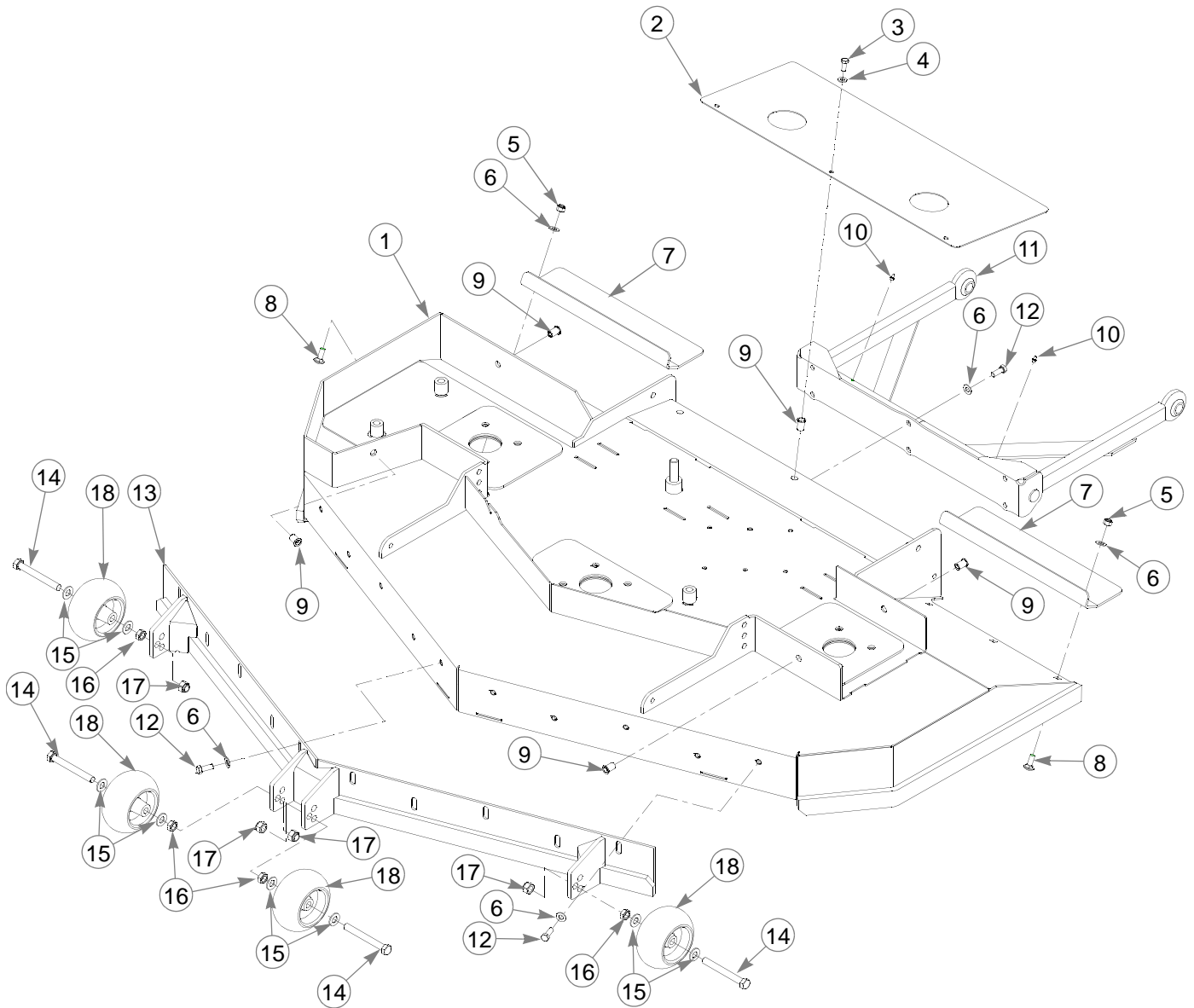
60" Side Discharge Deck Pulley Assembly

INDEX NO.	SERVICE PART NO.	MFG. PART NO.	QTY.	DESCRIPTION
1	781310	781310	1	B-SECTION BELT
2	016972	016972	2	NT .625-11 HX G5 ZNYC
3	794446	794446	4	CS .625-11 X 1.50 HX G5 ZN
4	347443	347443	1	TOP IDLER DECK BELT GUIDE
5	028118	028118	3	FW .62 X 1.00X.134 ZN
6	781385	781385	2	6.00" IDLER PULLEY
7	008573	008573	1	CS .500-13 X 2.500 HX G5 ZN
8	784199	784199	3	CS .312-18 X 1.250 FLT SH ZNYC
9	783878	783878	1	IDLER CLAMP
10	070037	070037	1	FW .530 X 1.06 X .19 HRD ZN
11	350561	350561	1	DECK IDLER BUSHING
12	015495	015495	1	STRAIGHT GREASE FITTING
13	349498	349498	1	IDLER ARM
14	781856	781856	1	5.00" IDLER PULLEY
15	781302	781302	1	IDLER SPRING
16	373191	059931	1	SIDE MOUNT CHAIN (21 LINKS)
17	349381	349381	1	R.S. PULLEY COVER
18	349399	349399	1	L.S. PULLEY COVER
19	768523	768523	4	FW .343 X .687 X .051/.080 HD ZNYC
20	034280	034280	4	CS .312-18 X .750 HX G5 ZNYC
21	078386	078386	3	FW .510 X 1.750 X .18 ZN
22	781328	781328	3	B-SECTION 6.10 E.O.D PULLEY
5 23	796235	796235	3	SPINDLE HOUSING ASSEMBLY
6 23	350595	N/A	3	SPINDLE HOUSING ASSEMBLY
24	212472	212472	3	KEY 1/4 SQ X 1.00 LONG
25	795252	795252	3	BLADE, F20.95"-H-F-CW
	782516	N/A	3	BLADE,20.95"-M-O-CW
	794859	N/A	3	BLADE, 20.95"-GAT-F-CW
	782557	N/A	3	BLADE,20.95"-GAT-O-CW
26	782474	782474	5	CW .631 2.250 X .187 PNT
27	016527	016527	15	CS .500-13 X 1.00 HX G5 ZN
28	767962	767962	12	FW .531 X 1.063 X .090 SAE HD ZN
29	783738	783738	2	CS .625-11 X 3.00 FULL HX G5 ZN
30	029934	029934	3	CS .625-11 X 3.00 HX G5 ZNYC

NOTES:

1. Apply grease to zerk (see owners manual).
2. Torque to 160 N-m.
3. Torque to 88.1-101.7 N-m.
4. See "Deck Belt Routing and Tensioning" on page 8-4 for belt tensioning.
5. See "Spindle Assembly-796235" on page 7-15 for breakdown.
6. See "Spindle Assembly-350595K" on page 7-14 for breakdown.
7. Used on mowers with serial number prior to 05011098.

60" Rear Discharge Deck Assembly



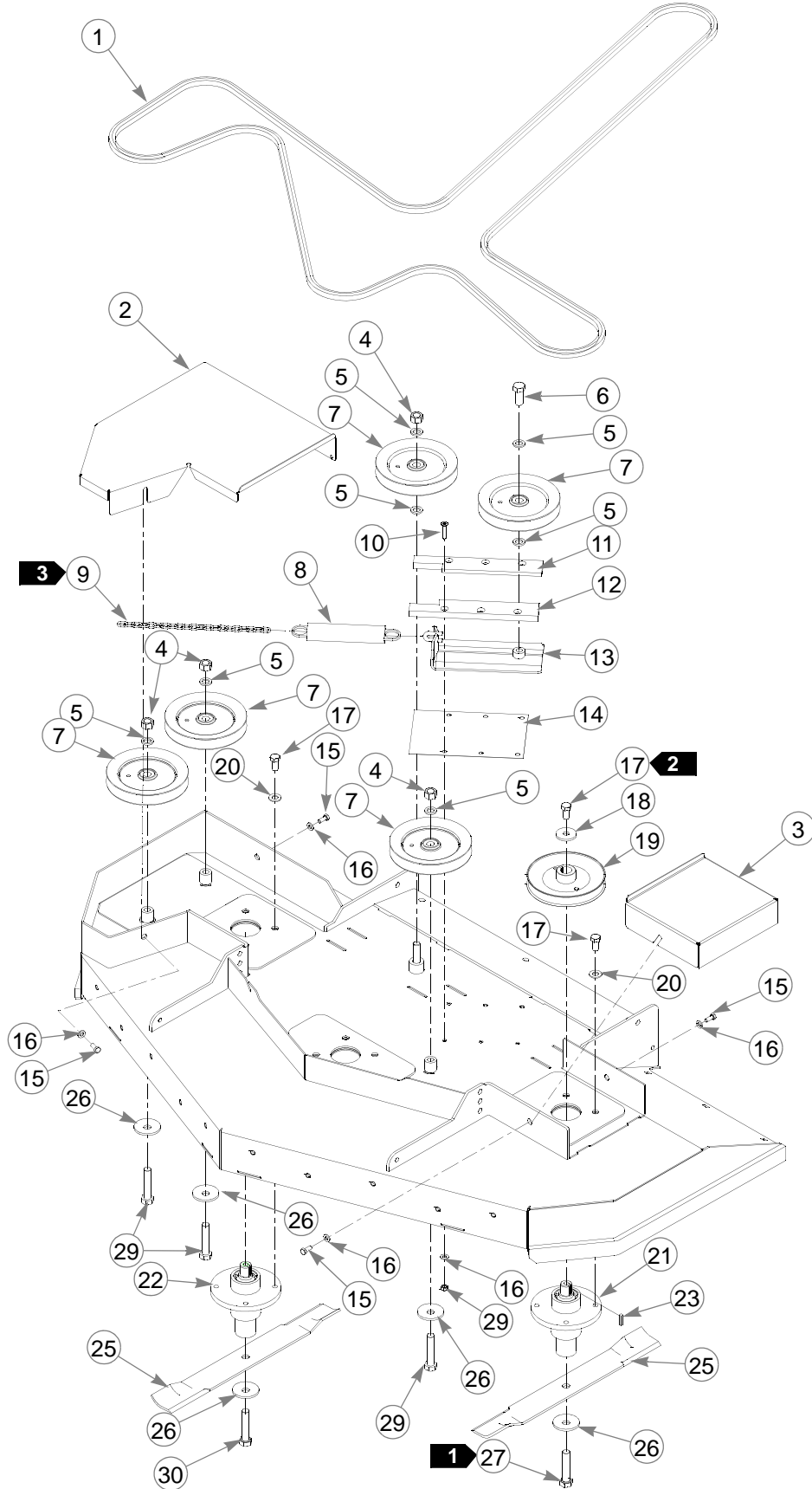
60" Rear Discharge Deck Assembly

INDEX NO.	SERVICE PART NO.	MFG. PART NO.	QTY.	DESCRIPTION	
3 ▶	1	547398	351395	1	60" REAR DISCHARGE DECK
	2	351957	351957	1	REAR DISCHARGE DECK GRASS SHIELD
	3	034280	034280	3	CS .312-18 X .750 HX G5
	4	768523	768523	3	FW .343 X .687 X .051/.080 HD ZN
	5	086660	086660	10	NT .375-16 HX LK NY
	6	767954	767954	22	FW .406 X .812 X .060 SAE HD ZN
	7	351676	351676	2	DECK STIFFENER ANGLE
	8	025395	025395	6	CB .375-16 X 1.00 STD CD
	9	N/A	808485	7	5/16-18 THREAD RIVET NUT
	10	015495	015495	2	STRAIGHT GREASE FITTING
	11	349803	349803	1	PUSHER
	12	036244	036244	16	CS .375-16 X 1.00 HX G5 ZN
	13	352591	352591	1	60" REAR DISCHARGE FRONT ANGLE
	14	781708	N/A	4	CS .500-13 X 4.25 HX G5 ZN
	15	767962	N/A	8	FW .531 X 1.063 X .090 SAE HD ZN
	16	053199	N/A	4	NT .500-13 HX JAM ZN
	17	781567	781567	4	NT .50-13 HXZY NL
	18	031997	N/A	4	ANTI-SCALP WHEEL
1 ▶ 2 ▶		788166	788166	4	ANTI SCALP WHEEL ASSEMBLY

NOTES:

1. Factory assembled in top hole for shipping purposes.
2. Includes Items 14 through 16 and 18.
3. Service part deck includes decals, see "60" Rear Discharge Deck Decals" on page 9-5.

60" Rear Discharge Deck Pulley Assembly



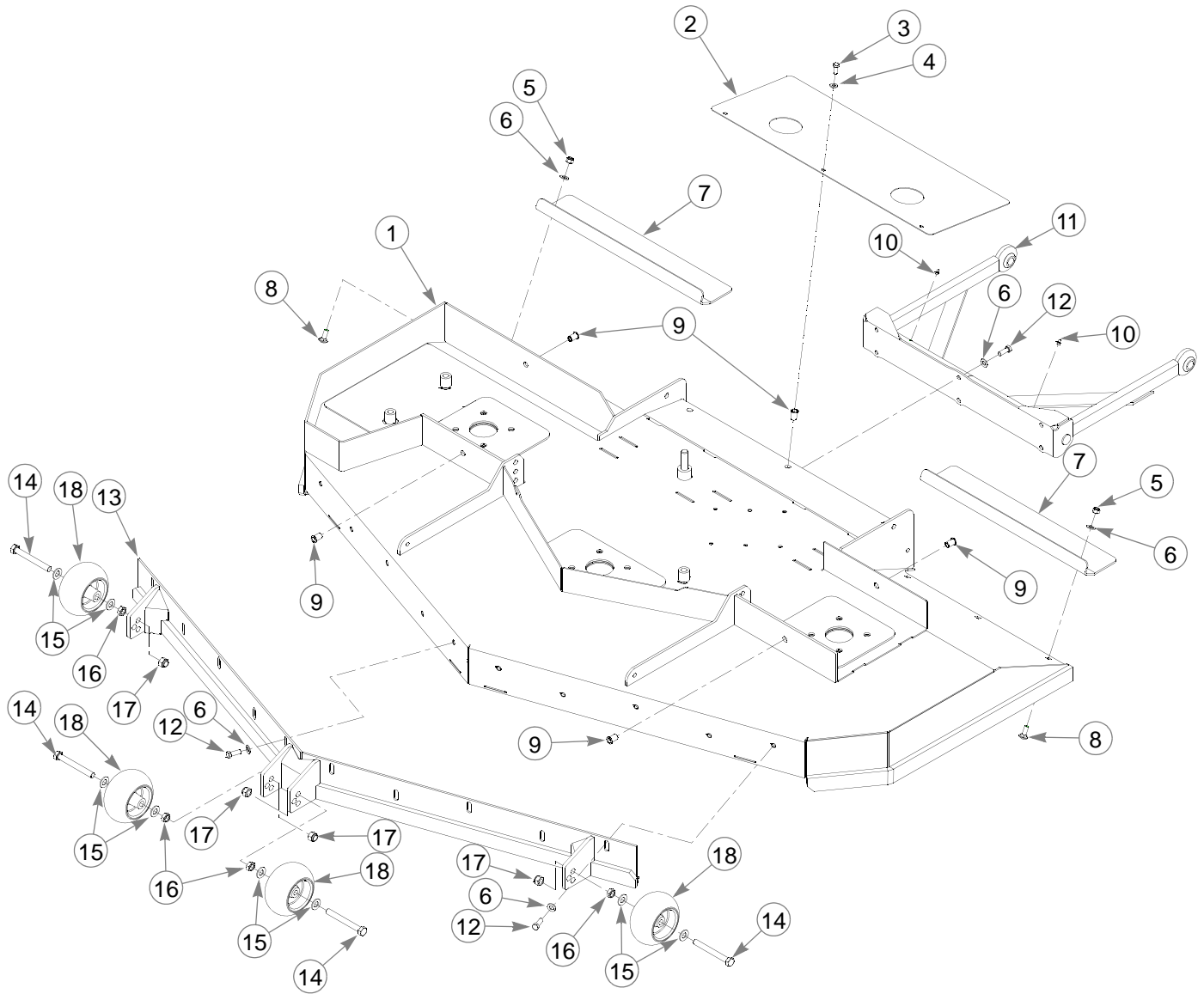
60" Rear Discharge Deck Pulley Assembly

INDEX NO.	SERVICE PART NO.	MFG. PART NO.	QTY.	DESCRIPTION
1	795781	795781	1	60" REAR DISCHARGE DECK BELT
2	351924	351924	1	RIGHT 60" REAR DISCHARGE PULLEY COVER
3	351932	351932	1	LEFT 60" REAR DISCHARGE PULLEY COVER
4	016972	016972	4	NT .625-11 HX G5 ZNYC
5	028118	028118	7	FW .62 X 1.00 X .134 ZN
6	794446	794446	1	CS .625-11 X 1.750 HX G5
7	796714	796714	5	6" HB IDLER PULLEY RD
8	781302	781302	1	IDLER SPRING
9	373191	059931	1	SIDE MOUNT CHAIN (21 LINKS)
10	784199	784199	6	CS .312-18 X 1.250 FLT SH ZNYC
11	600189	600189	1	UHMW DECK IDLER SLIDE RS
12	350884	350884	1	REAR DISCHARGE DECK IDLER
13	600171	600171	1	UHMW DECK IDLER SLIDE LS
14	786335	786335	1	.03 THICK UHMW
15	034280	034280	4	CS .312-18 X .750 HX G5
16	768523	768523	8	FW .343 X .687 X .051/.080 HD ZN
17	016527	016527	15	CS .500-13 X 1.00 HX G5 ZN
18	078386	078386	3	FW .510 X 1.75 X .18 ZN
4	781328	781328	3	B-SECTION 6.10 PULLEY
20	767962	767962	12	FW .531 X 1.063 X .090 SAE HD ZN
5	796235	796235	2	DECK SPINDLE ASSY
22	796680	796680	1	REAR DISCHARGE DECK SPINDLE ASSEMBLY
23	212472	212472	3	KEY 1/4 SQ X 1.00 LONG
24	793794	793794	2	BLADE, 20.50"-L-F-CW
25	795633	795633	1	BLADE, 20.50"-L-F-CCW
26	782474	782474	6	CW .631 X 2.250 X .187 PNT
27	029934	029934	2	CS .625-11 X 3.00 HX G5 ZNYC
28	058776	058776	4	NT .312-18 HXZY NL
29	783738	783738	3	CS .625-11X3.00 FULL HX G5 ZN
30	796722	796722	1	CS .625-11 X 3.00 LH HX G

NOTES:

1. Torque to 160 N-m.
2. Torque to 88.1-101.7N-m.
3. See "Deck Belt Routing and Tensioning" on page 8-4 for belt tensioning.
4. See "Spindle Assembly-796235" on page 7-15 for breakdown.
5. See "Spindle Assembly-796680" on page 7-16 for breakdown.

72" Rear Discharge Deck Assembly



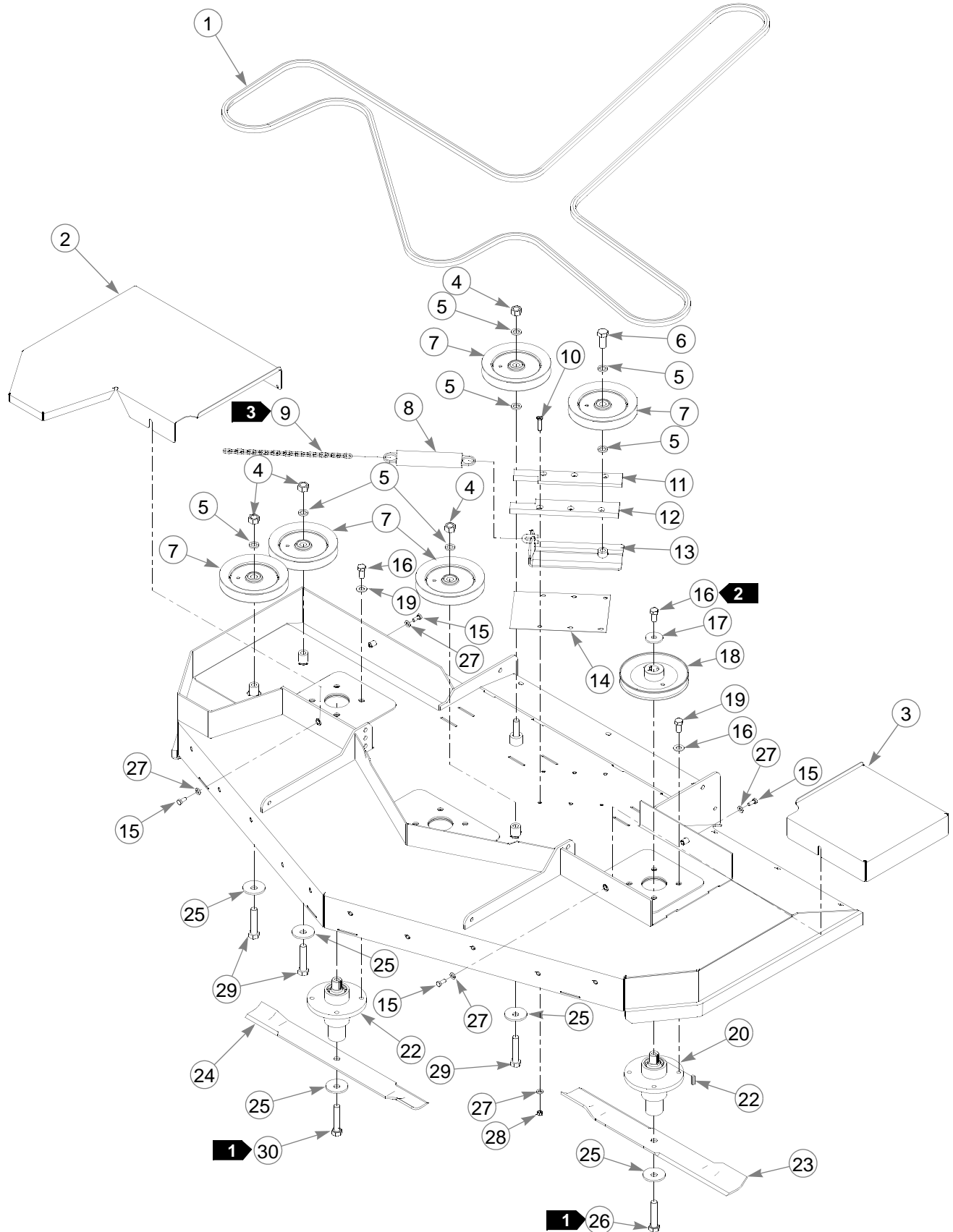
72" Rear Discharge Deck Assembly

INDEX NO.	SERVICE PART NO.	MFG. PART NO.	QTY.	DESCRIPTION
3 1	547406	101295	1	72" REAR DISCHARGE DECK
2	351957	351957	1	REAR DISCHARGE DECK GRASS SHIELD
3	034280	034280	3	CS .312-18 X .750 HX G5
4	768523	768523	3	FW .343 X .687 X .051/.080 HD ZN
5	086660	086660	10	NT .375-16 HX LK NY
6	767954	767954	22	FW .406 X .812 X .060 SAE HD ZN
7	101360	101360	2	DECK STIFFENER ANGLE
8	025395	025395	6	CB .375-16 X 1.00 STD CD
9	N/A	808485	7	5/16-18 THREAD RIVET NUT
10	015495	015495	2	STRAIGHT GREASE FITTING
11	349803	349803	1	PUSHER
12	036244	036244	16	CS .375-16 X 1.00 HX G5 ZN
13	101477	101477	1	72" REAR DISCHARGE FRONT ANGLE
14	781708	N/A	4	CS .500-13 X 4.25 HX G5 ZN
15	767962	N/A	8	FW .531 X 1.063 X .090 SAE HD ZN
16	053199	N/A	4	NT .500-13 HX JAM ZN
17	781567	781567	4	NT .50-13 HXZY NL
18	031997	N/A	4	ANTI-SCALP WHEEL
1 2	788166	788166	4	ANTI SCALP WHEEL ASSEMBLY

NOTES:

1. Factory assembled in top hole for shipping purposes.
2. Includes Items 14 through 16 and 18.
3. Service part deck includes decals, see "60" Rear Discharge Deck Decals" on page 9-5.

72" Rear Discharge Deck Pulley Assembly



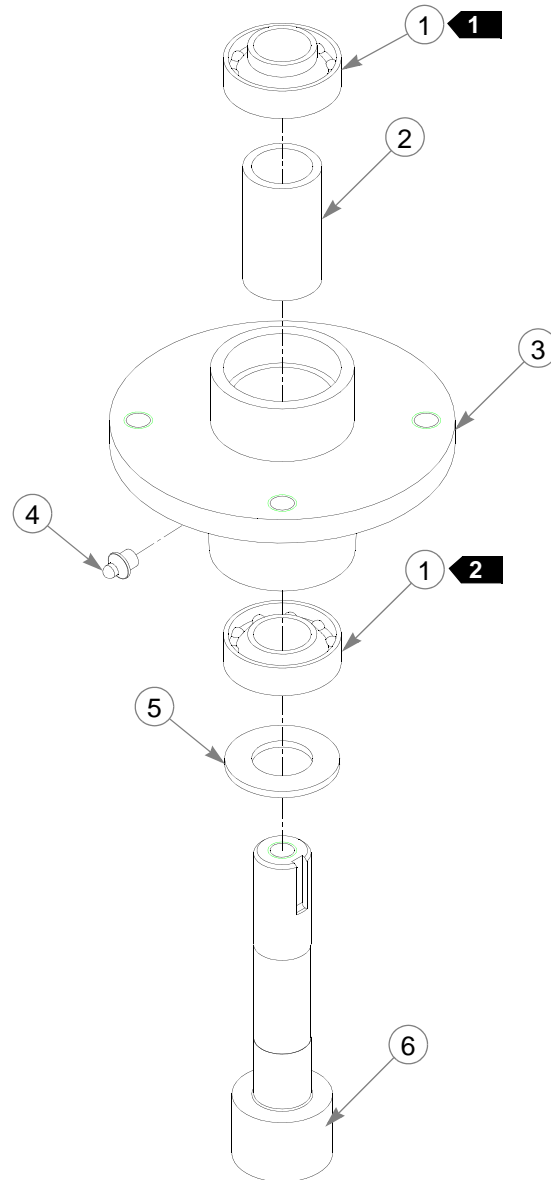
72" Rear Discharge Deck Pulley Assembly

INDEX NO.	SERVICE PART NO.	MFG. PART NO.	QTY.	DESCRIPTION
1	797167	797167	1	72" REAR DISCHARGE DECK BELT
2	101345	101345	1	RIGHT 72" REAR DISCHARGE PULLEY COVER
3	101352	101352	1	LEFT 72" REAR DISCHARGE PULLEY COVER
4	016972	016972	4	NT .625-11 HX G5 ZNYC
5	028118	028118	7	FW .62 X 1.00 X .134 ZN
6	794446	794446	1	CS .625-11 X 1.750 HX G5
7	796714	796714	5	6" HB IDLER PULLEY RD
8	781302	781302	1	IDLER SPRING
9	373191	059931	1	SIDE MOUNT CHAIN (21 LINKS)
10	797910	797910	6	CS .312-18 X 1.250 FLT SH ZNYC
11	600189	600189	1	UHMW DECK IDLER SLIDE RS
12	350884	350884	1	REAR DISCHARGE DECK IDLER
13	600171	600171	1	UHMW DECK IDLER SLIDE LS
14	786335	786335	1	.03 THICK UHMW
15	034280	034280	4	CS .312-18 X .750 HX G5
16	016527	016527	15	CS .500-13 X 1.00 HX G5 ZN
17	078386	078386	3	FW .510 X 1.75 X .18 ZN
4	18 723486	723486	3	DRIVE PULLEY DB-112
19	767962	767962	12	FW .531 X 1.063 X .090 SAE HD ZN
5	20 796235	796235	2	DECK SPINDLE ASSY
21	796680	796680	1	REAR DISCHARGE DECK SPINDLE ASSEMBLY
22	212472	212472	3	KEY 1/4 SQ X 1.00 LONG
23	796839	796839	2	BLADE, 23.86-L-F-CW
24	796508	796508	1	BLADE, 23.86-L-F-CCW
25	782474	782474	6	CW .631 X 2.250 X .187 PNT
26	029934	029934	2	CS .625-11 X 3.00 HX G5 ZNYC
27	768523	768523	8	FW .343 X .687 X .051/.080 HD ZN
28	058776	058776	4	NT .312-18 HXZY NL
29	783738	783738	3	CS .625-11X3.00 FULL HX G5 ZN
30	796722	796722	1	CS .625-11 X 3.00 LH HX G

NOTES:

1. Torque to 118 ft. lbs.
2. Torque to 65-75 ft. lbs.
3. See "Deck Belt Routing and Tensioning" on page 8-4 for belt tensioning.
4. See "Spindle Assembly-796235" on page 7-15 for breakdown.
5. See "Spindle Assembly-796680" on page 7-16 for breakdown.

Spindle Assembly-350595K

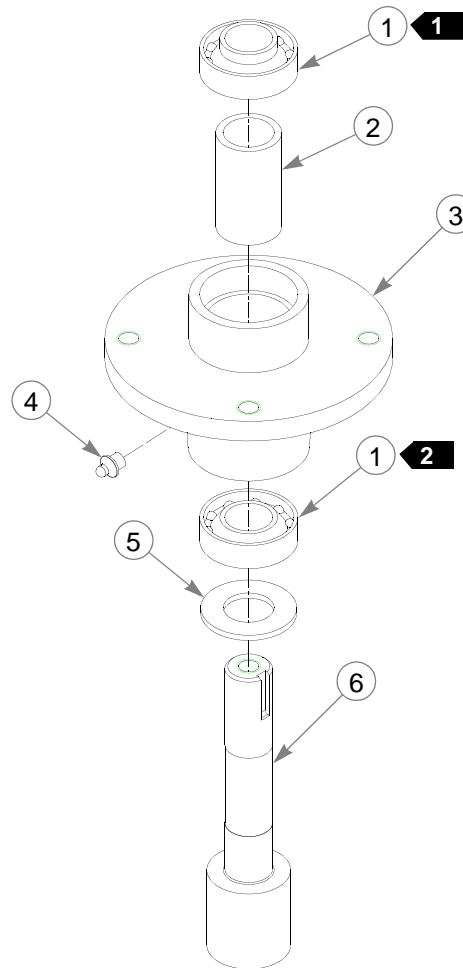


INDEX NO.	SERVICE PART NO.	MFG. PART NO.	QTY.	DESCRIPTION
1	077123	N/A	2	BEARING W/O COLLAR
2	766204	N/A	1	BLADE SPINDLE BUSHING
3	034843	N/A	1	CAST SPINDLE HOUSING
4	012005	N/A	1	GREASE FITTING
5	072272	N/A	1	FW 1.06 X 2.00 X.134 SAE ZN
6	788547	N/A	1	SADDLELESS SPINDLE SHAFT

NOTES:

1. Install upper bearing with extended inner race up.
2. Install lower bearing with extended inner race down.

Spindle Assembly-796235

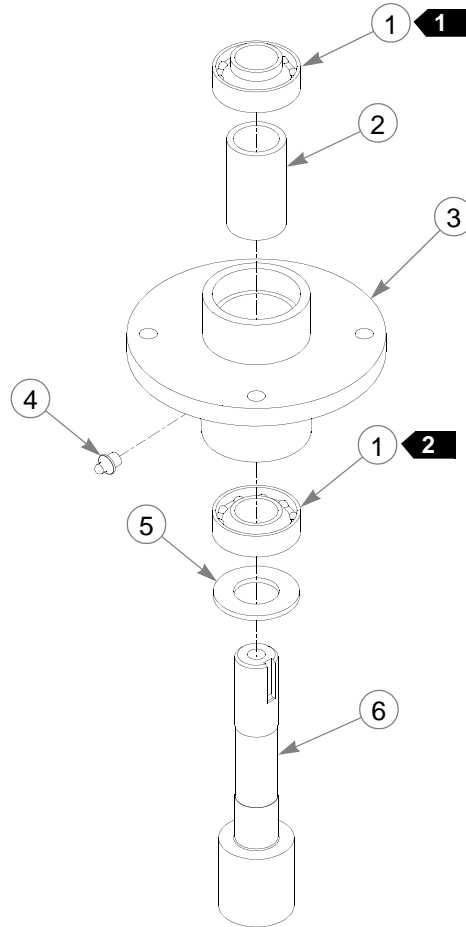


INDEX NO.	SERVICE PART NO.	MFG. PART NO.	QTY.	DESCRIPTION
1	077123	N/A	2	BEARING W/O COLLAR
2	766204	N/A	1	BLADE SPINDLE BUSHING
3	034843	N/A	1	CAST SPINDLE HOUSING
4	012005	N/A	1	GREASE FITTING
5	072272	N/A	1	FW 1.06 X 2.00 X.134 SAE ZN
6	796227	N/A	1	SADDLELESS SPINDLE SHAFT

NOTES:

1. Install upper bearing with extended inner race up.
2. Install lower bearing with extended inner race down.

Spindle Assembly-796680



INDEX NO.	SERVICE PART NO.	MFG. PART NO.	QTY.	DESCRIPTION
1	077123	N/A	2	BEARING W/O COLLAR
2	766204	N/A	1	BLADE SPINDLE BUSHING
3	034843	N/A	1	CAST SPINDLE HOUSING
4	012005	N/A	1	GREASE FITTING
5	072272	N/A	1	FW 1.06 X 2.00 X.134 SAE ZN
6	796698	N/A	1	SPINDLE SHAFT

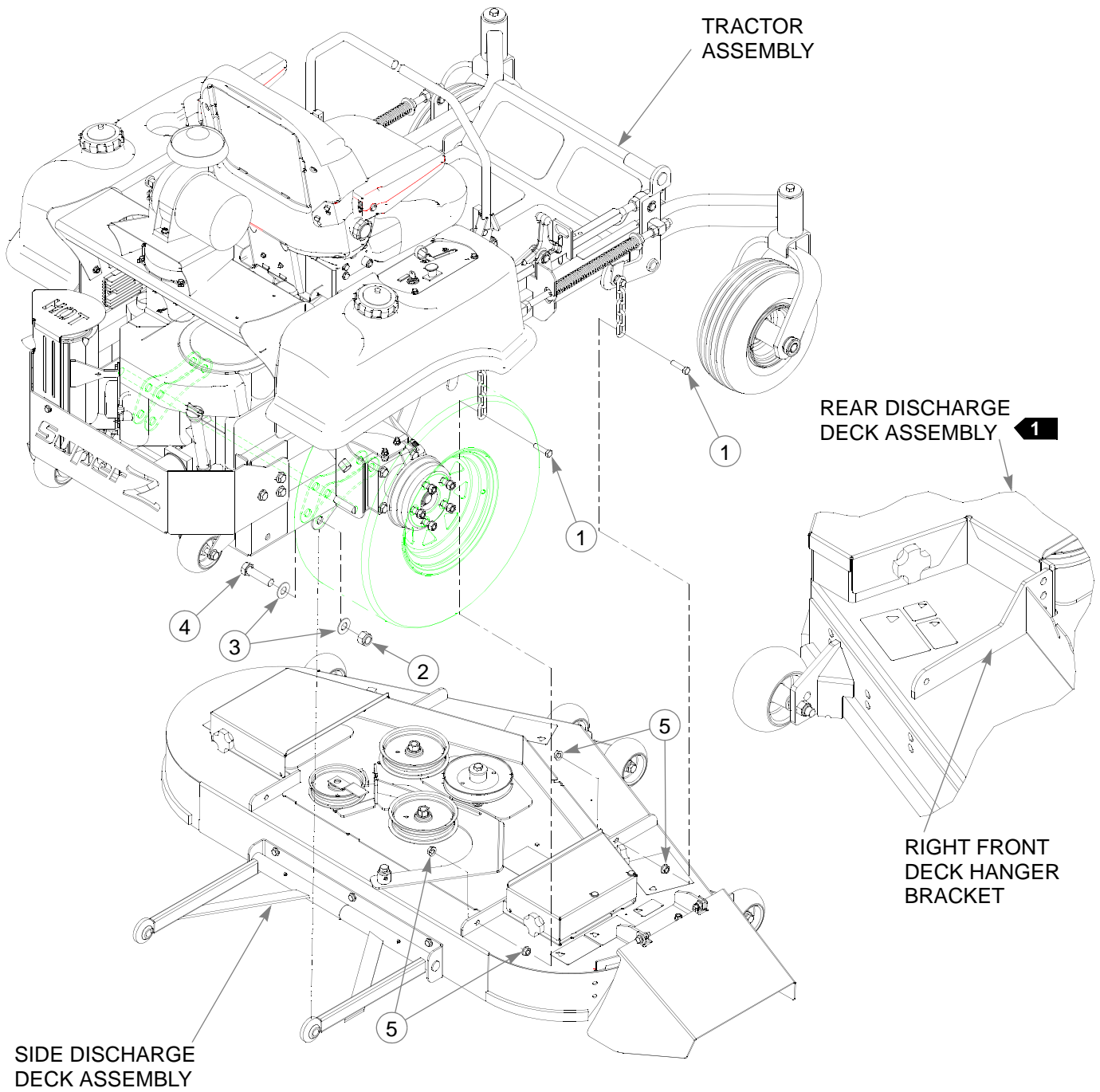
NOTES:

1. Install upper bearing with extended inner race up.
2. Install lower bearing with extended inner race down.

Chapter 8 Contents

Deck Installation	8-2
Deck Belt Routing and Tensioning.....	8-4

Deck Installation



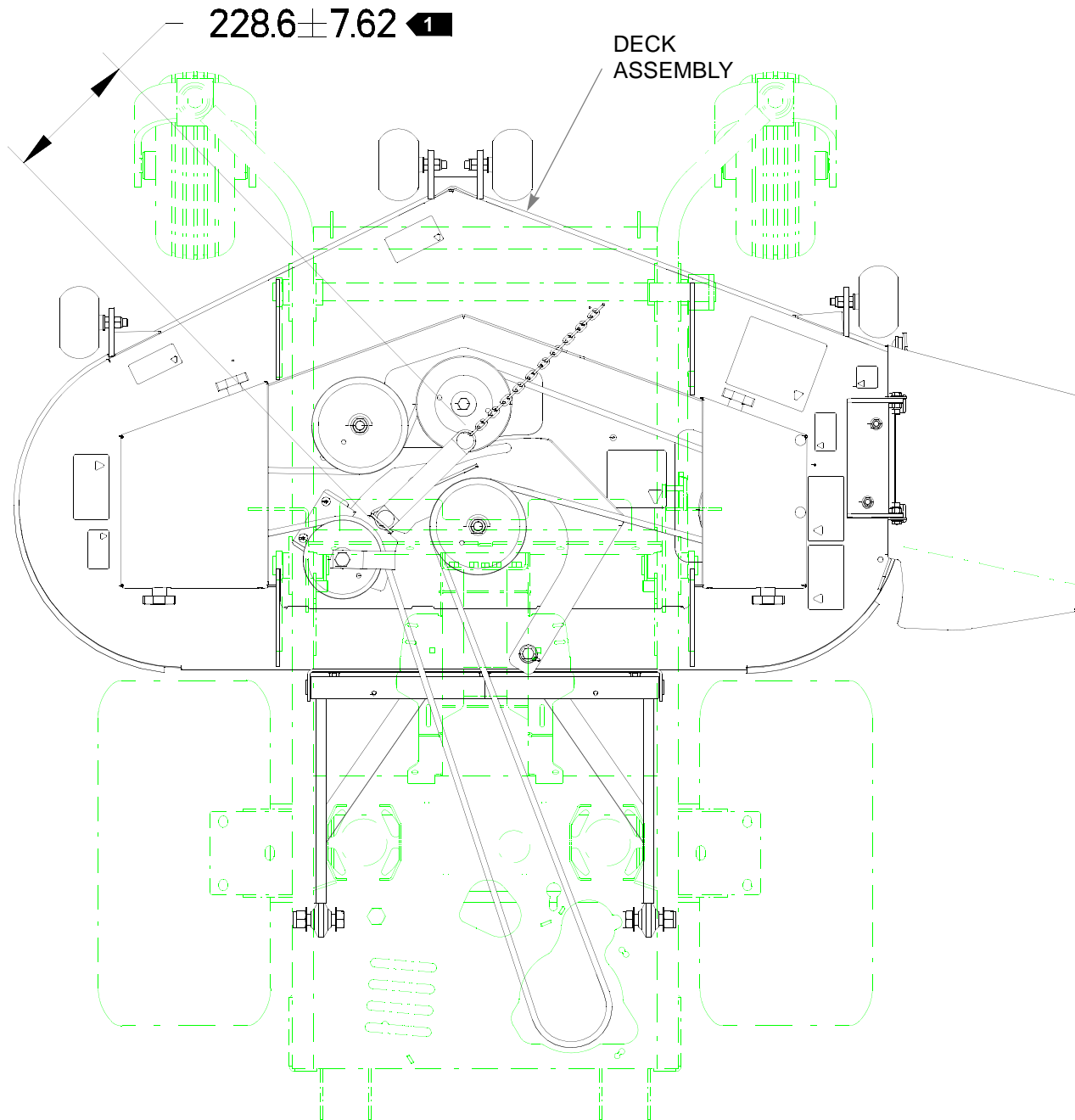
Deck Installation

ITEM NO.	SERVICE PART NO.	MFG. PART NO.	QTY	DESCRIPTION
1	055749	055749	4	CS .437-14 X 1.750 HX G5 ZN
2	061101	061101	2	NT .750-10 HX NL ZN
3	025296	025296	4	FW .760 X 1.625 X.08 ZN
4	051169	051169	2	CS .750-10 X 3.000 HX G5 ZN
5	704643	704643	8	NT .437-14 HX FLG ZN

NOTES:

1. Install front deck hanger chains in lower holes only.
2. Side Discharge Deck installation is shown, Rear Discharge Deck installation is similar.

Deck Belt Routing and Tensioning



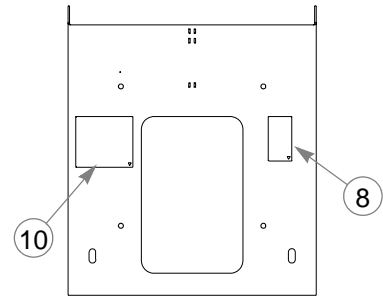
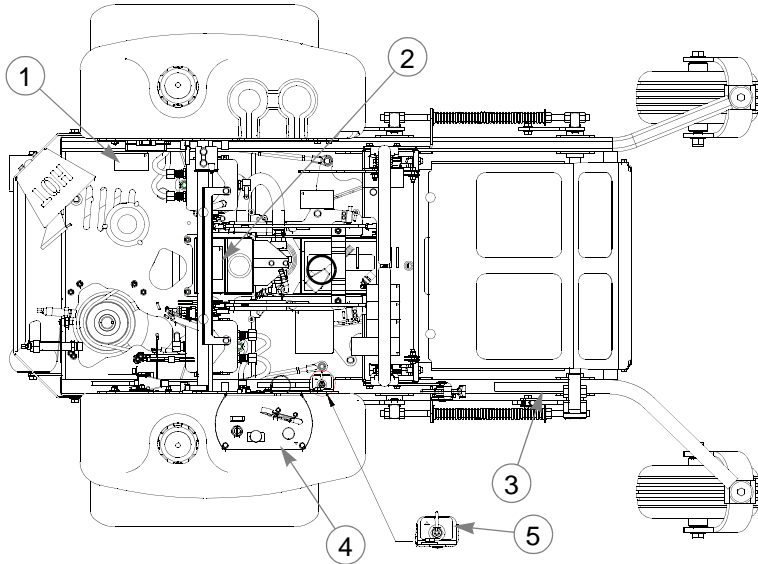
NOTES:

1. Spring length after tensioning belt. Measured from outside of hook to outside of hook.
2. Route belt as shown.
3. Side discharge deck is shown, rear discharge deck is similar.

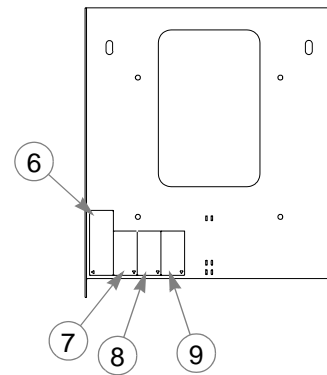
Chapter 9 Contents

Tractor Decals	9-2
Side Discharge Deck Decals	9-4
60" Rear Discharge Deck Decals—CE Version	9-5
Seat Installation	9-6

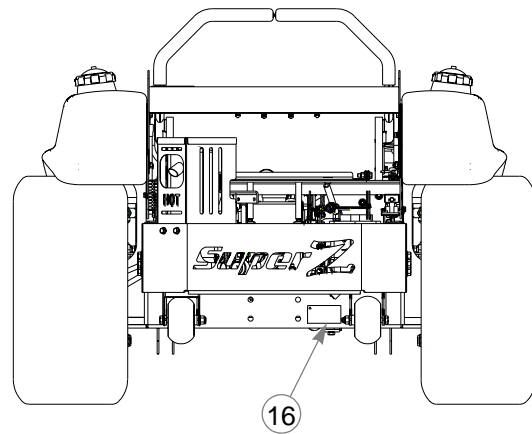
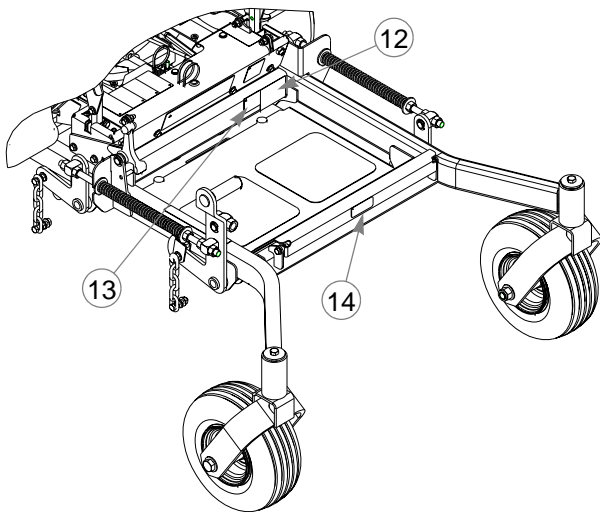
Tractor Decals



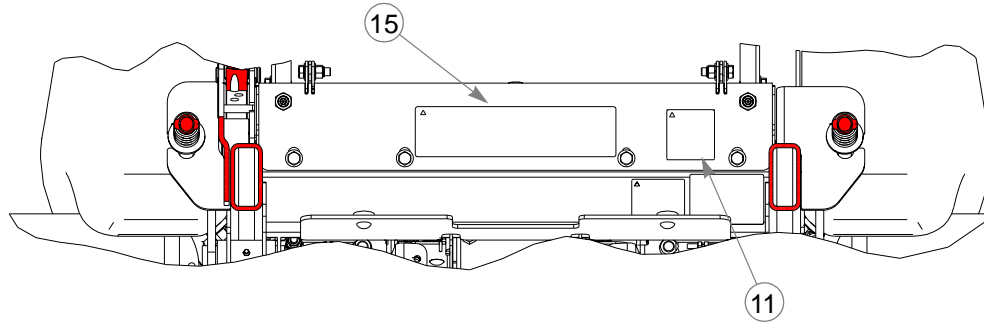
BOTTOM OF SEAT PAN



TOP OF SEAT PAN



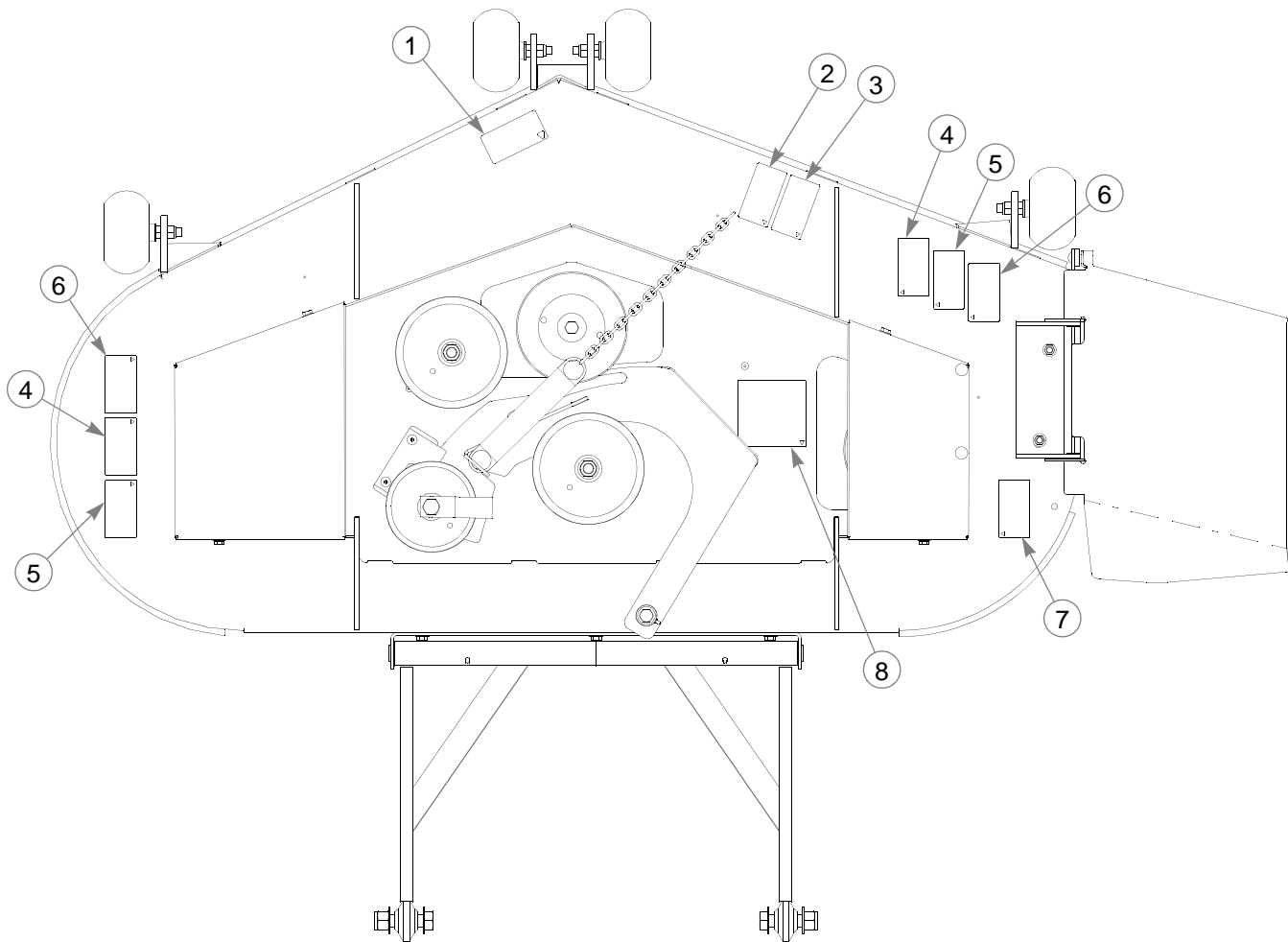
Tractor Decals



INDEX NO.	SERVICE PART NO.	MFG. PART NO.	QTY.	DESCRIPTION
1	727008CE	727008CE	1	HYDRAULIC FLUID DECAL - CE
2	779280CE	779280CE	1	HOT DECAL - CE
3	781427CE	781427CE	1	DECK HEIGHT INDICATOR DECAL
4	784702CE	784702CE	1	INSTRUMENT PANEL DECAL - CE
5	791830	791830	1	FUEL INDICATOR DECAL
6	789727CE	789727CE	1	EYE/EAR/FOOT PROTECTION DECAL
7	777029CE	777029CE	1	MAXIMUM ANGLE CE DECAL
8	789719CE	789719CE	1	READ SERVICE MANUAL DECAL - CE
9	789701CE	789701CE	1	READ OWNER'S MANUAL DECAL - CE
10	727016CE	727016CE	1	BATTERY DECAL - CE
11	789776CE	789776CE	1	DBA DECAL - CE
12	N/A	083279	1	TURF PROD SERIAL NO PLATE
13	776310	776310	1	CE MARK DECAL
14	793588	793588	1	HUSTLER NAME PLATE
15	782615	782615	1	SUPER Z ID DECAL
16	771436CE	771436CE	1	STABILIZER ROLLERS DECAL - CE

NOTES:

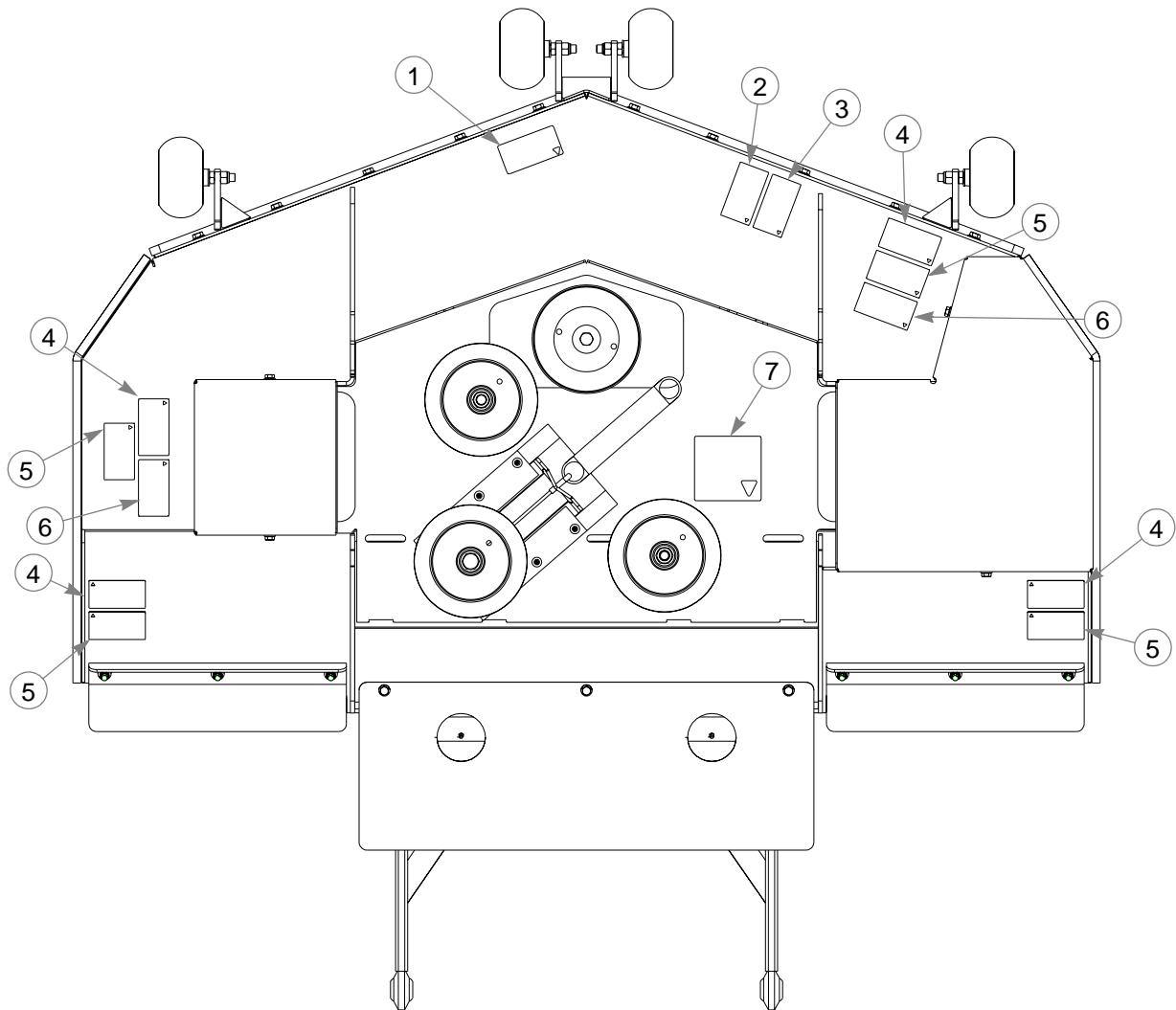
Side Discharge Deck Decals



INDEX NO.	SERVICE PART NO.	MFG. PART NO.	QTY.	DESCRIPTION
1	786277	786277	1	60" DECK ID DECAL
2	789719CE	789719CE	1	READ SERVICE MANUAL DECAL - CE
3	789701CE	789701CE	1	READ OWNER'S MANUAL DECAL - CE
4	727453CE	727453CE	2	DECK COVER DECAL - CE
5	727438CE	727438CE	2	FINGERS AND TOES DECAL - CE
6	789685CE	789685CE	2	THROWN OBJECT DECAL
7	727420CE	727420CE	1	DISCHARGE CHUTE DECAL - CE
8	781419CE	781419CE	1	BELT ROUTING DECAL - CE

NOTES:

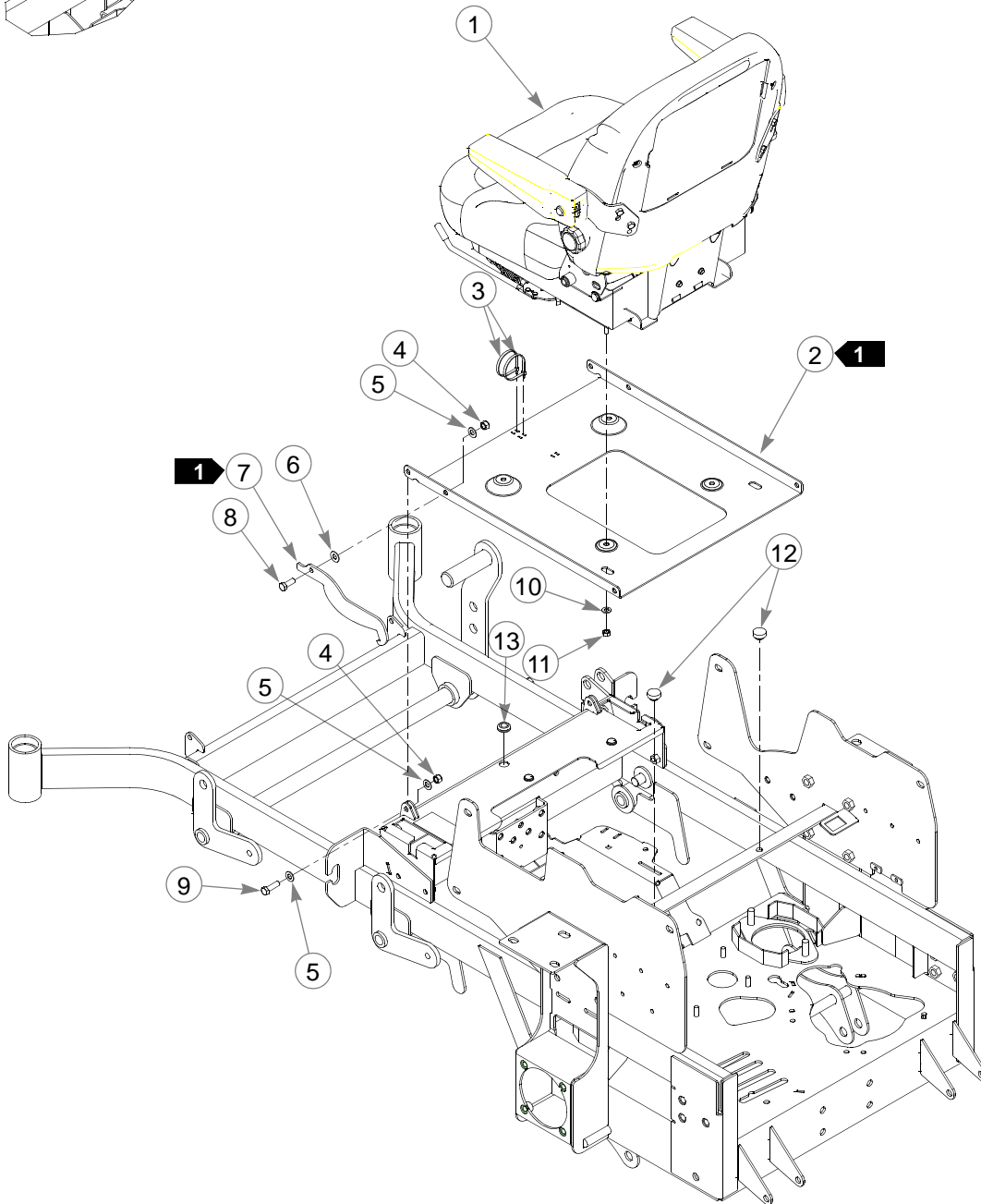
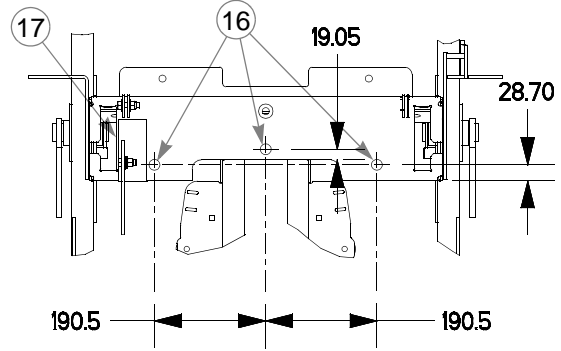
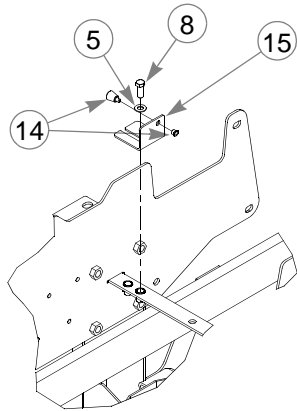
60" Rear Discharge Deck Decals



INDEX NO.	SERVICE PART NO.	MFG. PART NO.	QTY.	DESCRIPTION
1	786277	786277	1	60 DECK ID DECAL
2	789701CE	789701CE	1	READ OWNER'S MANUAL DECAL
3	789719CE	789719CE	1	READ SERVICE MANUAL DECAL
4	789685CE	789685CE	4	THROWN OBJECT DECAL
5	727438CE	727438CE	4	FINGERS AND TOES DECAL
6	727453CE	727453CE	2	CE DECK COVER DECAL,
7	796953	796953	1	REAR DISCHARGE DECK ROUTING DECAL

NOTES:

Seat Installation



Seat Installation

INDEX NO.	SERVICES PART NO.	MFG. PART NO.	QTY	DESCRIPTION
1	792051	792051	1	MICHIGAN SUSPENSION SEAT
2	350041	350041	1	SEAT PAN
3	000331	000331	2	BLACK CABLE TIE
4	086660	086660	3	NT .375-16 HX LK NY
5	767954	767954	7	FW .406 X .812 X .060 SAE HD ZN
6	724716	724716	1	FIBER WASHER
7	350421	350421	1	SEAT PAN STOP
8	036244	036244	3	CS .375-16 X 1.000 HX G5 ZN
9	052860	052860	2	CS .375-16 X1.250 HX G5 ZN
10	768523	768523	4	FW .343 X .687 X .051/.080 HD ZN/Y
11	034272	034272	4	NT .312-18 HX G5 ZN
12	781880	781880	2	BUMPER
13	080358	080358	1	GM .50 X 1.00 X .75 X .12 GROMMET
14	748756	748756	1	LATCH SPRING PLUNGER
15	350462	350462	1	SEAT LATCH BRACKET
16	781617	781617	3	RUBBER BUMPER
17	722199	722199	1	2" WIDE SCOTCH POLYURETHANE 5.55" LONG

NOTES:

1. Must pivot freely.
2. Use quantity of 6 for 927558 & 927566 (Kawasaki 26 HP liquid cooled).
3. Service parts available for Michigan Suspension seats:

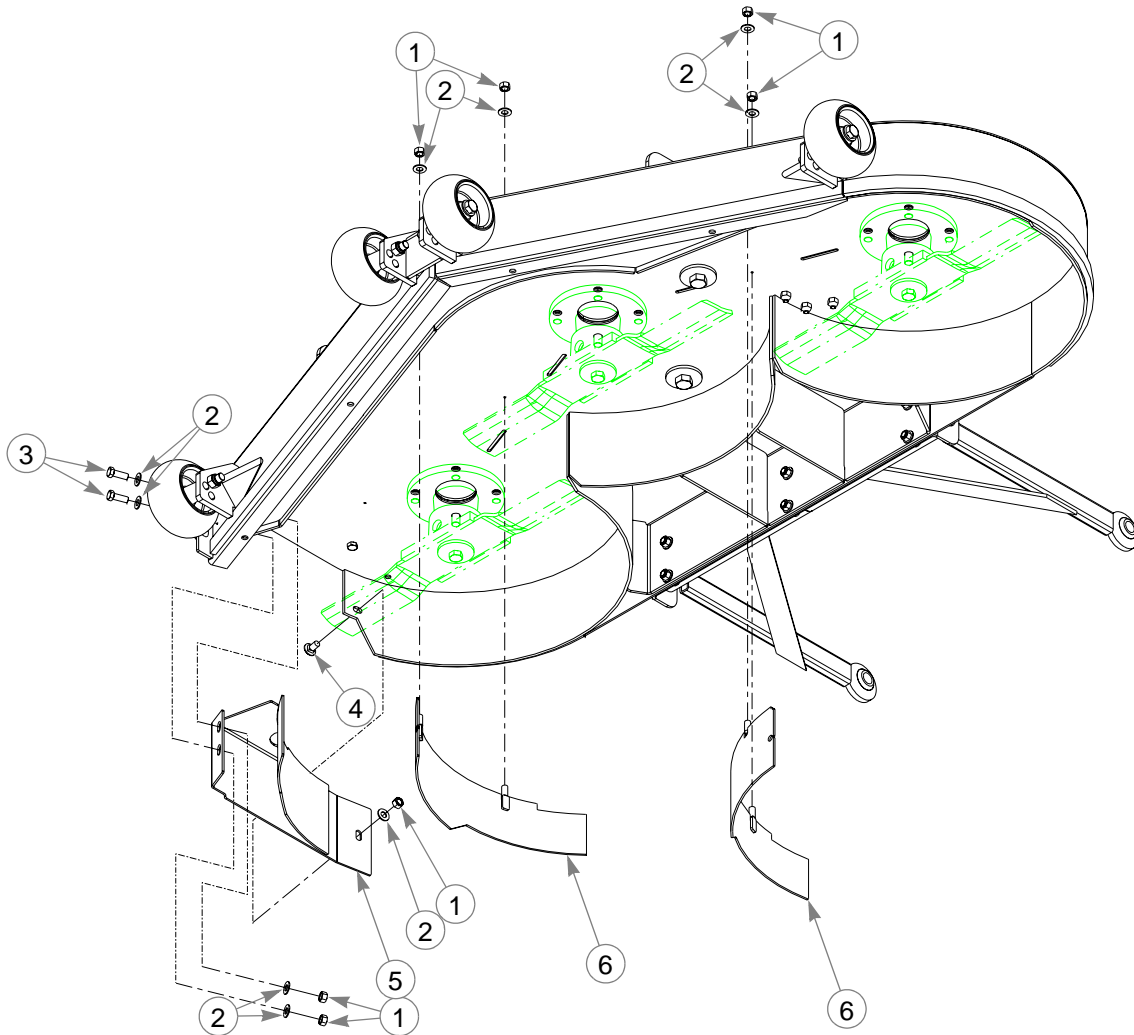
<u>PART NO.</u>	<u>DESCRIPTION</u>
793307	SLIDE KIT
793323	KNOB KIT
793281	BACK CUSHION KIT
793299	SEAT CUSHION KIT
793315	SEAT SWITCH
793265	MOLDED ARMREST (FITS BOTH ARMRESTS)
793273	ARMREST STOP ASSEMBLY
797571	SEAT BACK PANEL KIT

Chapter 10 Contents

Mulch Kit	10-2
60" Mulch Kit-352427	10-3

Mulch Kit

2

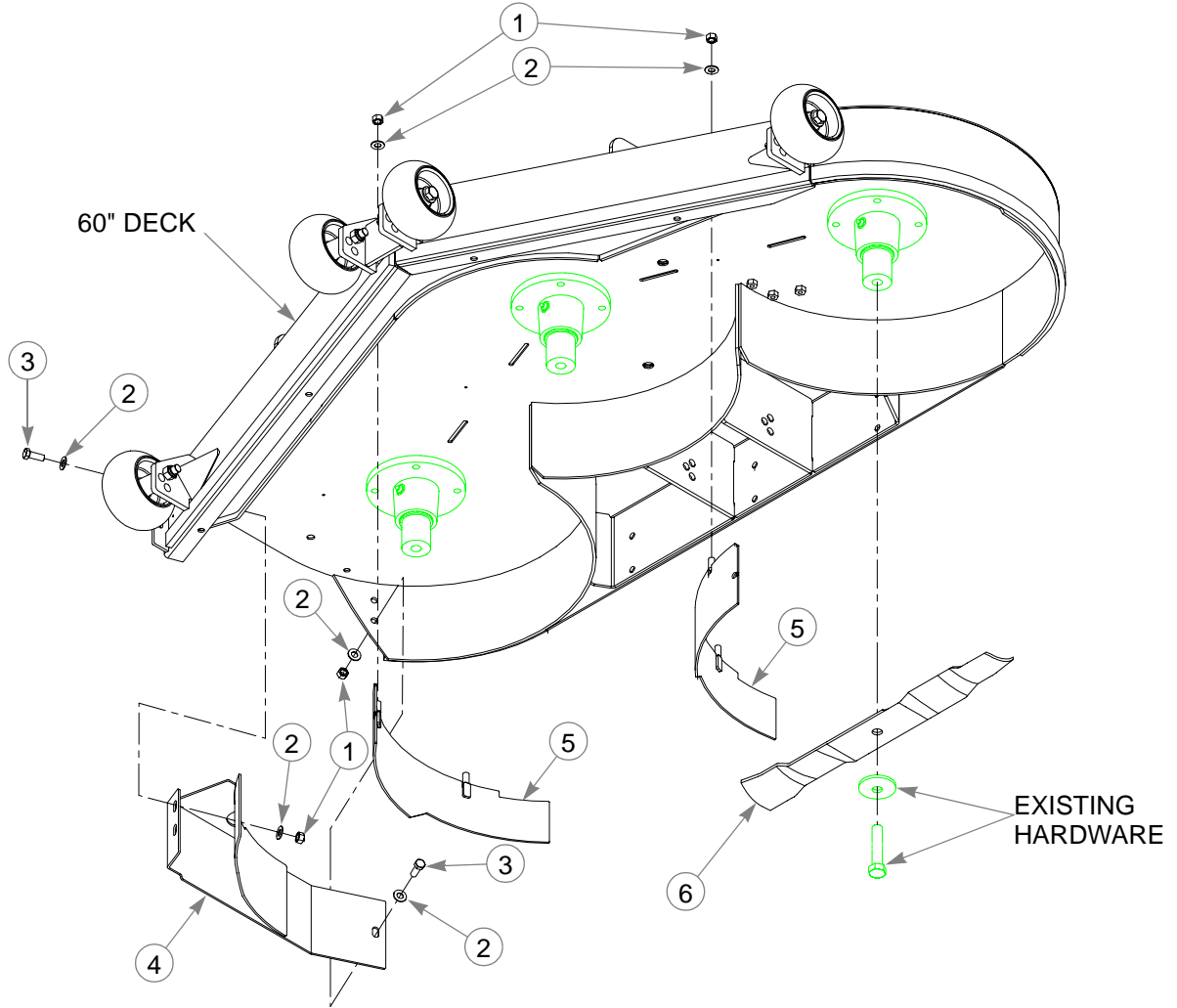


INDEX NO.	SERVICE PART NO.	MFG. PART NO.	QTY.	DESCRIPTION
1	054502	054502	7	NT .375-16 HX GRD 5 ZN
2	767954	767954	9	FW .406 X .812 X .060 SAE HD ZN
3	036244	036244	2	CS .375-16 X 1.00 HX G5 ZN
4	011320	011320	1	CB .375-16 X .750 STD ZN
5	346056	346056	1	RIGHT MULCH BAFFLE
6	346023	346023	2	60" COMMON MULCH BAFFLE

NOTES:

1. 60" Mulch Kit - 346411
2. Used on mowers with serial numbers prior to 05011098.

60" Mulch Kit-352427



INDEX NO.	SERVICE PART NO.	MFG. PART NO.	QTY.	DESCRIPTION
1	054502	054502	7	NT .375-16 HX GRD 5 ZN
2	767954	767954	10	FW .406 X .812 X.060 SAE HD ZN
3	036244	036244	3	CS .375-16 X 1.00 HX G5 ZN
4	100420	100420	1	RIGHT MULCH BAFFLE
5	348599	348599	2	72" COMMON MULCH BAFFLE
6	793380	793380	3	BLADE,23.86"-MUL-F-CW

NOTES:

1. Used on mowers with serial number 05011098 and later.

Numerical Index

Part No.	Page No.	Part No.	Page No.	Part No.	Page No.
Index					
Part Numbers					
000323	5-7, 5-9	052837	5-3	348599	10-3
000331	5-7, 5-9, 9-7	052860	2-3, 7-3, 9-7	348714	4-7
000398	5-7	053199	4-7, 7-3, 7-7, 7-11	348755	4-7
005116	4-7	054502	4-7, 7-3, 10-2, 10-3	348797	4-7
008193	3-3, 4-11	055749	4-5, 8-3	348862	4-7
008573	3-3, 7-5	055822	4-7, 5-7, 5-9	348888	4-7
011320	10-2	055939	4-3, 5-3	348946	4-7
012005	7-14, 7-15, 7-16	055947	3-3, 5-11	348987	4-7
015495	4-5, 4-11, 7-3, 7-5, 7-7, 7-11	057661	5-3	349100	7-3
015511	6-4, 6-5	058776	4-3, 7-9, 7-13	349266	6-3
015818	5-7, 5-9	059832	4-7, 5-11	349308	5-11
016527	4-11, 5-3, 5-7, 5-9, 7-5, 7-9, 7-13	059931	7-5, 7-9, 7-13	349381	7-5
016899	5-3	061077	6-6	349399	7-5
016972	7-5, 7-9, 7-13	061101	4-11, 6-3, 8-3	349498	7-5
019521	6-4, 6-6	063198	4-7	349522	7-3
024927	4-3	068239	6-7	349761	4-11
025296	4-11, 6-3, 8-3	068478	1-1	349803	7-3, 7-7, 7-11
025395	7-7, 7-11	068551	3-3, 4-7	349944	5-7, 5-9
026237	5-11	070037	7-5	350041	9-7
027912	1-1, 3-3	072272	7-14, 7-15, 7-16	350264	4-7
027920	1-1	077123	7-14, 7-15, 7-16	350330	4-7
028118	4-11, 7-5, 7-9, 7-13	078386	7-5, 7-9, 7-13	350397	4-7
029751	5-3	080358	9-7	350421	9-7
029868	4-3	083022	5-11	350462	9-7
029876	4-3, 5-3	083196	4-11	350504	7-3
029934	7-5, 7-9, 7-13	083279	9-3	350561	7-5
031997	6-7, 7-3, 7-7, 7-11	086660	2-3, 4-7, 7-3, 7-7, 7-11, 9-7	350595	7-5
032763	3-3	100412	2-2	350884	7-9, 7-13
032771	3-3	100420	10-3	351395	7-7
033035	3-3	101295	7-11	351676	7-7
034272	3-3, 4-3, 4-5, 4-7, 4-11, 5-3, 9-7	101345	7-13	351924	7-9
034280	4-3, 5-3, 7-5, 7-7, 7-9, 7-11, 7-13	101352	7-13	351932	7-9
034843	7-14, 7-15, 7-16	101352	7-13	351957	7-7, 7-11
036236	4-7, 4-11, 5-3	101360	7-11	352591	7-7
036244	4-7, 5-7, 5-9, 7-3, 7-7, 7-11, 9-7, 10-2, 10-3	101477	7-11	353482	2-2
039677	6-4, 6-5	102707	5-11	354035	4-7
041152	4-7	212076	4-11	356121	5-3
041475	6-3	212472	7-5, 7-9, 7-13	357616	3-3
044818	5-3	263517	6-3	357780	5-3
045088	5-7, 5-9	305615	2-3	359547	2-3
045765	6-3	344267	6-3	366765	4-11
045898	5-11	346023	10-2	373191	7-5, 7-9, 7-13
047654	5-3	346056	10-2	375527	1-1
048876	4-7	346411	10-2	377994	5-3
051169	8-3	347443	7-5	380691	5-3
		347684	4-7	382168	5-3
		347989	5-7, 5-9	387035	6-3
		348284	4-5	395533	2-3
		348318	4-5	545731	2-2
		348391	4-5	547398	7-7
		348417	4-3	547406	7-11
		348458	4-5	600171	7-9, 7-13

Part No.	Page No.	Part No.	Page No.	Part No.	Page No.
600189	7-9, 7-13	777029CE	9-3	783118	4-7, 4-8
600437	4-5	778365	5-11	783126	4-7, 4-8
700484	3-3	778738	5-3	783696	4-7
704163	4-7	779280CE	9-3	783704	3-3
704643	4-5, 8-3	779306	5-9	783712	4-11
704932	5-11	779850	4-3	783720	3-3
705137	5-3	781153	4-7	783738	7-5, 7-9, 7-13
705178	4-7	781211	4-7	783761	4-11
705608	3-3	781229	4-5	783829	4-11
705954	6-3	781237	6-6	783837	5-3
712257	5-11	781245	6-6	783845	4-7
712919	5-9	781252	6-6	783852	4-7
712927	4-7	781260	4-7	783878	7-5
713198	3-3	781286	4-7	783928	3-3
714998	5-11	781294	4-5	783936	1-1, 3-3
722199	9-7	781302	4-11, 7-5, 7-9, 7-13	783985	3-3
723486	7-13	781310	1-1, 7-5	783993	3-3
724716	9-7	781328	7-5, 7-9	784025	3-3
727008CE	9-3	781385	7-5	784058	6-6
727016CE	9-3	781419CE	9-4	784066	6-6
727420CE	9-4	781427CE	9-3	784082	3-3
727438CE	9-4, 9-5	781443	1-1, 4-11	784108	3-3
727453CE	9-4, 9-5	781526	3-3	784116	3-3
740696	4-3	781534	3-3	784124	3-3
744276	4-3	781567	6-7, 7-3, 7-7, 7-11	784132	3-3
745059	5-7	781583	4-7	784181	5-7
747303	1-1	781617	9-7	784199	7-5, 7-9
747741	6-4	781658	3-3	784207	1-1
747782	6-3	781708	7-3, 7-7, 7-11	784223	6-3
747832	6-4	781716	4-7	784702CE	9-3
748756	9-7	781831	4-5	784918	4-11
756270	4-5	781856	4-11, 7-5	784983	3-4
762195	5-11	781880	2-3, 7-3, 9-7	785261	1-1, 5-4
763318	5-4	781922	4-7	785279	1-1
765339	4-7	782078	6-6	785378	5-3
766204	7-14, 7-15, 7-16	782086	6-6	785436	1-1
767954	2-3, 4-7, 5-7, 5-9, 7-3, 7-7, 7-11, 9-7, 10-2, 10-3	782284	6-6	785634	1-1
767962	3-3, 4-11, 5-3, 5-7, 5-9, 6-7, 7-3, 7-5, 7-7, 7-9, 7-11, 7-13	782292	1-1	785659	4-11
768515	3-3, 4-7, 5-3, 5-11	782383	3-3	785741	5-3
768523	3-3, 4-3, 4-7, 4-11, 5-3, 7-5, 7-7, 7-9, 7-11, 7-13, 9-7	782441	3-3	785808	5-11
768820	4-3	782458	3-3	786277	9-4, 9-5
769166	5-3	782466	4-11	786335	7-9, 7-13
770859	6-6	782474	7-5, 7-9, 7-13	786673	5-3
771428	4-3	782516	7-5	787366	4-11
771436CE	9-3	782557	7-5	787713	5-3
772079	1-1	782615	9-3	788000	5-3, 5-11
776310	9-3	782763	5-3	788018	5-3
776476	5-11	782771	6-4, 6-5	788026	5-3
		782870	3-3	788042	3-3
		782880	3-3	788166	7-3, 7-7, 7-11
		782953	4-7	788174	3-3
		782979	4-7	788216	5-3
		782995	4-5	788547	7-14
		783001	4-5	788943	5-3

Part No.	Page No.	Part No.	Page No.	Part No.	Page No.
789537	6-5	793323	9-7	796318	5-7, 5-9
789628	1-1	793380	1-1, 10-3	796326	5-7
789685CE	9-4, 9-5	793398	1-1	796508	7-13
789701CE	9-3, 9-4, 9-5	793588	9-3	796672	5-3
789719CE	9-3, 9-4, 9-5	793794	7-9	796680	7-9, 7-13
789727CE	9-3	794198	1-1	796698	7-16
789776CE	9-3	794446	4-11, 7-5, 7-9, 7-13	796714	7-9, 7-13
791251	4-11	794479CE	1-1	796722	7-9, 7-13
791277	5-7	794859	1-1, 7-5	796839	7-13
791830	9-3	794867	1-1	796953	9-5
792051	9-7	795252	1-1, 7-5	797084	5-9
793240	5-9	795260	1-1	797167	1-1, 7-13
793265	9-7	795310	5-3	797571	9-7
793273	9-7	795526	1-1	797910	7-13
793281	9-7	795633	7-9	798603	6-3
793299	9-7	795781	1-1, 7-9	808485	7-3, 7-7, 7-11
793307	9-7	796227	7-15	808493	2-2
793315	9-7	796235	7-5, 7-9, 7-13	926725	1-1